

P Introduction product

● SC200/200(BP)施工升降机 Series construction elevator

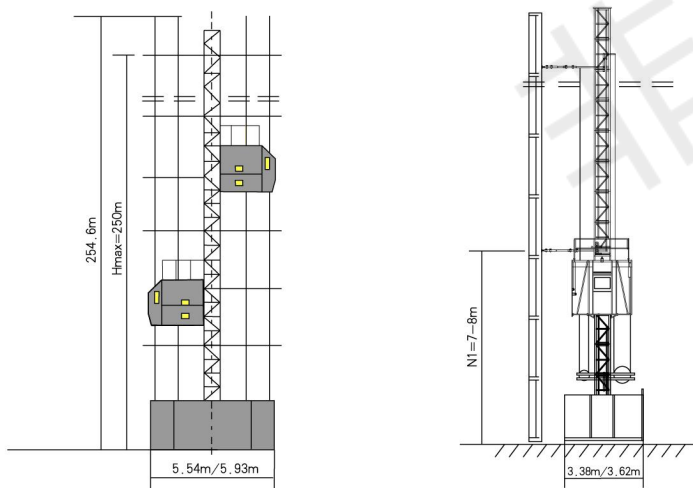
概述及特点 Sum and characterist

SC200/200 (BP) (低速变频) 型施工升降机是在SC200/200基础上加装变频控制系统的新一代施工升降机产品。与SC200/200比较, 它具有启制动运行平稳、速度可在0—40m/min范围内调节、节能、机械磨损小、噪音低等显著特点。

SC200/200 (BP) (low speed-variable frequency control) construction hoist is designed based on SC200/200 by adding variable frequency control system with advantages of stable start and stop, energy saving, little mechanical wear and low noise. The speed is adjustable with 0-40m/min.



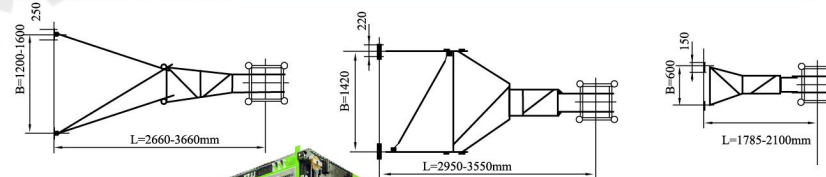
外形尺寸 Outline dimensions



SC200/200(BP) 型主要性能参数 SC200/200 (BP) Function parameter table

序号 No.	项目 Items	单位 Unit	参数 Parameter				备注 Remarks
			普通型		节能型		
			三驱	两驱	两驱	中置式	
1	额定载重量 Rated load	kg	2000 × 2				
2	额定提升速度 Rated lifting speed	m/min	0— 40				
3	最大提升高度 Maximum lifting height	m	250				
4	电机功率 Motor power	kw	11×3×2	15×2×2	13×2×2	13×2×2	
5	额定工作电流 Rated current	A	72×2	72×2	54×2	54×2	
6	变频器功率 Inverter power	kw	37×2				
7	安全防坠器型号 Security Anti-dropping Model		SAJ4.0—1.2				
8	电源电压频率 Voltag of power supply		380v/50HZ				
9	电源容量 Power capacity	kVA	120	120	100	100	
10	标准节尺寸 The size of the standard section	mm	650×650×1508				
11	吊笼空间 (长×宽×高) The hoists space (L × W × H)	mm	3000 × 1300 × 2200 3000 × 1500 × 2200 3200 × 1500 × 2500				冲孔板或钢丝网 Punching board or steel mesh

附墙方式及连接尺寸 Dimensions of Tie-in



P Introduction product

SC200/200施工升降机 Series construction elevator

概述及特点 Sum and characteristic

SC200/200型施工升降机是我公司吸收国内外先进技术最新设计的新一代施工升降机产品。与传统的升降机产品相比，其结构受力更加合理紧凑、笼体坚固耐用、造型美观、部件精巧、拆装维修方便、使用安全舒适可靠。

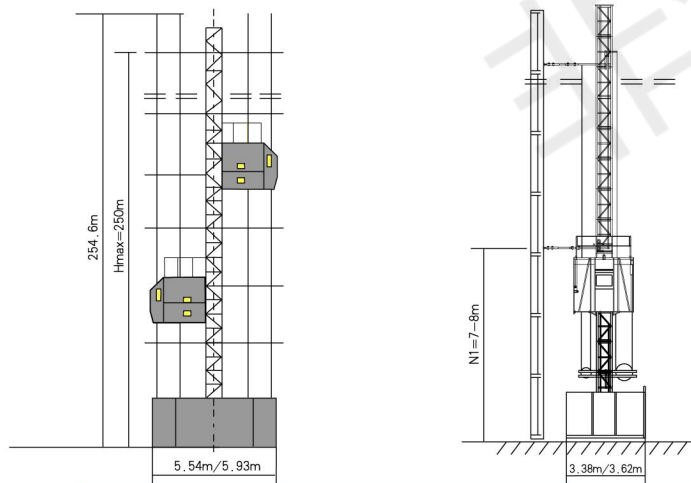
产品传动机构分为三电机、两电机、节能新型等多种形式，传动板安装在吊笼顶部，可有效防止冲顶事故发生，且笼内乘坐舒适；操作面板集成楼层呼叫、超载控制器、电源电压等显示装置，使操作方便舒适；各导向轮采用防脱保护等多项专利技术，确保设备运行安全。

The SC200/200 construction hoist the new-generation product designed with advanced technology from domestic and abroad introduced to our company. Compared with traditional construction hoist, the new generation SC200/200 is more comfortable, safe, reliable and convenient for dismantling and maintenance with more reasonable and compact structure, strong and durable cages, attractive appearance and delicate parts.

There are many types of drive mechanisms include three-motors, two motors and energy saving new type etc. The transmission plate is fitted at top of cage to avoid any header accident and provide a comfortable cage for passengers. Floor calling system, over load limiter, volt displayer are integrated on control panel for convenient operation. Many patent technologies such as anti-derail technology are used on each guide wheels to ensure safe running.



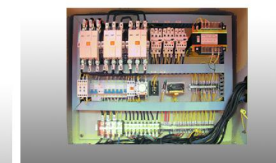
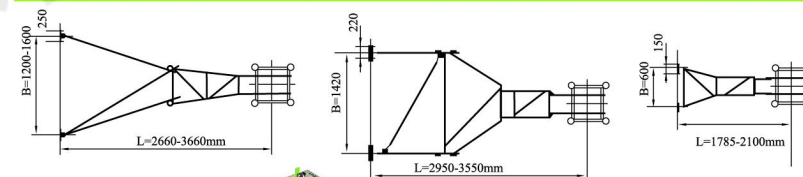
外形尺寸 Outline dimensions



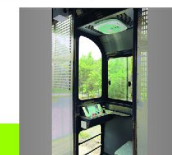
SC200/200 型主要性能参数 SC200/200 Function parameter table

序号 No.	项目 Items	单位 Unit	参数 Parameter				备注 Remarks
			普通型		节能型		
			三驱	两驱	两驱	中置式	
1	额定载重量 Rated load	kg	2000 × 2				
2	额定提升速度 Rated lifting speed	m/min	33				
3	最大提升高度 Maximum lifting height	m	250				
4	电机功率 Motor power	kw	11×3×2	15×2×2	13×2×2	13×2×2	
5	额定工作电流 Rated current	A	72×2	72×2	54×2	54×2	
6	变频器功率 Inverter power	kw	——				
7	安全防坠器型号 Security Anti-dropping Model		SAJ4.0—1.2				
8	电源电压频率 Voltag of power supply		380v/50HZ				
9	电源容量 Power capacity	kVA	120	120	100	100	
10	标准节尺寸 The size of the standard section	mm	650×650×1508				
11	吊笼空间 (长×宽×高) The hoists space (L × W × H)	mm	3000 × 1300 × 2200 3000 × 1500 × 2200 3200 × 1500 × 2500				冲孔板或钢丝网 Punching board or steel mesh

附墙方式及连接尺寸 Dimensions of Tie-in



吊笼 Hoists
电柜 Cabinet
传动机构 Transmission mechanism
司机室 Cab
标准节 Standard section



P Introduction roduct

SCD200/200系列施工升降机 Series construction elevator

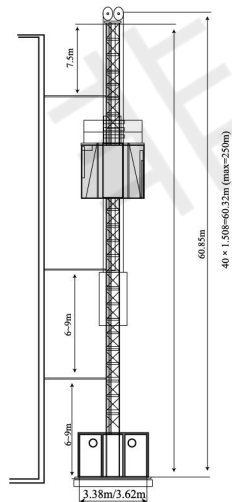
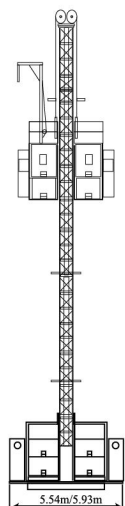
概述及特点 Sum and characteristic

SCD200/200型施工升降机是在SC200/200基础上最新设计的新一代施工升降机产品，与SC200/200比较，它具有节能、机械磨损小、噪音低等显著特点。

SCD200/200 construction hoist is designed based on SC200/200 with more advantages such as energy saving, little mechanical wear and low noise.



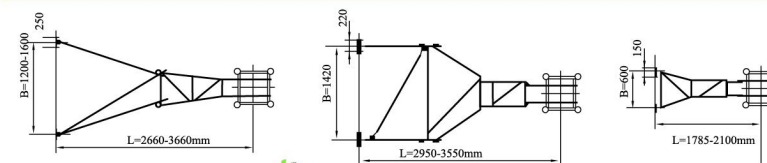
外形尺寸 Outline dimensions



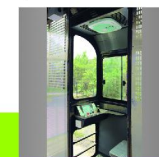
SCD200/200 型主要性能参数 SCD200/200 Function parameter table

序号 NO.	项目 Items	单位 Unit	参数 Parameter	备注 Remarks
1	额定载重量 Rated contained quality	kg	2000 × 2	
2	额定提升速度 Take-off and landing speed	m/min	33	
3	最大提升高度 Most take-off height	m	150	
4	电机功率 Motor power	kw	11 × 2 × 2	
5	额定工作电流 Rated operating current	A	46 × 2	
6	变频器功率 Inverter power	kw	—	
7	安全防坠器型号 Security Anti-dropping Model		SAJ3.0 — 1.2	
8	电源电压频率 Supply voltage frequency		380v/50HZ	
9	电源容量 Power capacity	KVA	100	
10	对重重量 Counterpoise quality	kg	1000	
11	标准节尺寸 Mast section size	mm	650 × 650 × 1508	
12	吊笼空间(长×宽×高) The hoists space (L×W×H)	mm	3000 × 1300 × 2200 3000 × 1500 × 2200 3200 × 1500 × 2500	冲孔板或钢丝网 punching board or steel mesh

附墙方式及连接尺寸 Dimensions of Tie-in



吊笼 Hoists
电柜 Cabinet
传动机构 Transmission counter mechanism
对重 Counterpoise weight
天轮系统 Top wheel
司机室 Cab
标准节 Standard section



P Introduction product

● SC100/100(M)货用施工升降机 Type freight construction hoist

概述及特点 Sum and characterist

SC100/100 (M) 型货用施工升降机是我公司在SC系列人货两用施工升降机的技术基础上, 结合低层建筑特点, 吸收当前国内外先进技术设计开发的新一代货用施工升降机产品。与传统的钢丝绳式货用施工升降机相比, 其结构合理、使用安全、拆装维修方便、造型美观、使用寿命长。

该产品使用单电机齿轮齿条传动, 传动机构置于吊笼内, 将防坠安全器、超载保护器、极限开关等集于传动板上, 笼内安装摄像头, 装有监控显示屏的专用操作台设置于笼外, 通过电缆线实现远程操作。其主要部件—导轨架及附墙架与SC系列人货施工升降机通用。

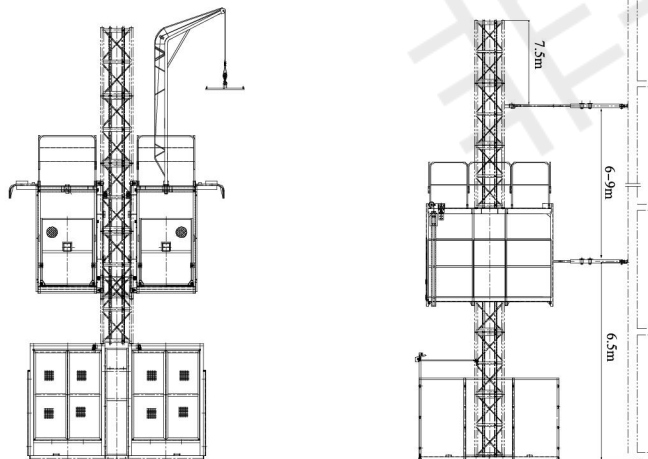
该产品适用于高度40米以下的建筑工程施工中的货物垂直运输。

SC100 / 100 (M) type freight construction hoist, base on the technology of both freight and person dual-purpose SC series construction elevator.combining the characteristics of low-rise buildings, absorb the current domestic and foreign advanced technology design and development of a new generation of freight elevator construction products. Compared with the traditional wire rope construction freight lifts, reasonable structure, safe, easy disassembly and maintenance, attractive appearance, long service life.

This products use single-motor rack and pinion, the transmission mechanism placed inside the cage, the anti-fall safety device, overload protection, limit switches, etc. set in the drive plate, cage installation of cameras, equipped with a monitor display screen special operation Taiwan set up in the cage, remote operation via cable. Its main components - rail brackets and rack attached to the wall with the SC series construction hoist common people and goods.

The product is suitable for the building construction which lower than the height of 40 meters to vertical transport of freight.

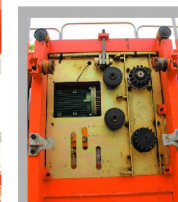
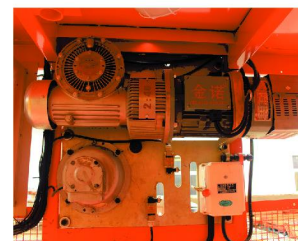
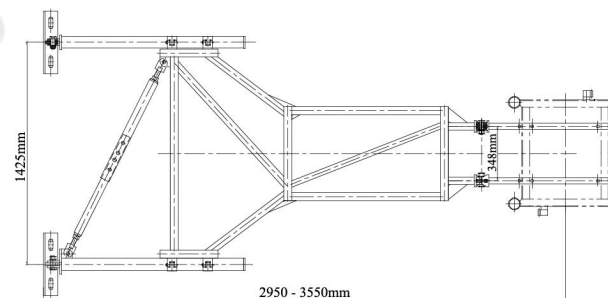
外形尺寸 Outline dimensions



SC100/100 (M) 货用施工升降机 SC100/100(M) Type freight construction hoist

序号 No.	项目 project	单位 unit	参数 parameter
1	额定载重量 Rated load	Kg	1000 *2
2	额定提升速度 Rated lifting speed	m/min	28
3	最大提升高度 Maximum lift height	m	100
4	电机功率 Motor Power	kw	13 *2
5	额定工作电流 Rated operating current	A	27*2
6	安全防坠器型号 Security anti-dropping Model		SAJ3.0 — 1.2
7	电源电压频率 Supply voltage frequency		38 0V/50HZ
8	电源容量 battery capacity	KVA	30
9	吊杆起重量 From the weight of the boom	kg	250
10	标准节尺寸 Standard section dimensions	mm	650*650*1508
11	吊笼空间 (长 * 宽 * 高) Cage space	mm	3000*1300*2200

附墙方式及连接尺寸 Dimensions of Tie-in

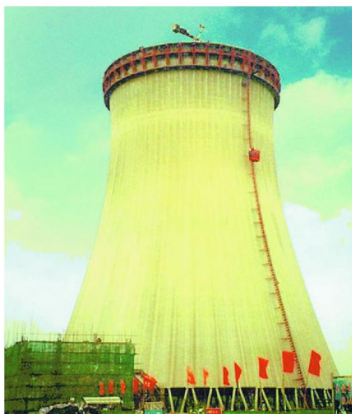


P Introduction roduct

曲线导轨升降机 curve hoist

应用于APPLY FOR:

桥梁	Bridge
水塔	Water power
化工厂	Chemical factory
井道内部	Well inside
电厂	Power plant
烟囱	Chimney
其他	Other special building



曲线导轨升降机技术参数表
Technical data of curve hoist

产品型号 Model	额定载重量 Capacity(kg)	提升速度 Lifting speed(m/min)	电机功率/笼 Motor power/per cage(kW)
SCQ120	1200	33	2x11
SCQ160	1600	33	3x11

备注:

- 吊笼尺寸推荐规格: (LxWxH) (m): 2.4x1.3x2.5, 3x1.3x2.5, 3.2x1.5x2.5, 吊笼尺寸规格也可根据用户要求制作;
- 可采用变频调速系统。

- Recommended cage dimension (LxWxH): 2.4x1.3x2.5, 3x1.3x2.5, 3.2x1.5x2.5 cage dimension is according to requirement of customer;
- Can select frequency conversion system.

斜导轨升降机 lean hoist

应用于APPLY FOR:

桥梁	Bridge
水塔	Water power
化工厂	Chemical factory
井道内部	Well inside
其他	Other special building



斜导轨升降机技术参数表
Technical data of lean hoist

产品型号 Model	额定载重量/笼 Capacity/per cage(kg)	提升速度 Lifting speed(m/min)	电机功率/笼 Motor power/per cage(kW)
SCX100/100	2x1000	33	2x2x11
SCX200/200	2x2000	33	2x3x11

备注:

- 吊笼尺寸推荐规格: (LxWxH) (m): 2.4x1.3x2.5, 3x1.3x2.5, 3.2x1.5x2.5, 吊笼尺寸规格也可根据用户要求制作;
- 可采用变频调速系统, 最大速度可达到60m/min.

- Recommended cage dimension (LxWxH): 2.4x1.3x2.5, 3x1.3x2.5, 3.2x1.5x2.5 cage dimension is according to requirement of customer;
- Max;Lifting speed can be up to 60m/min apply frequency conversion system