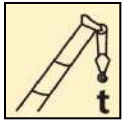


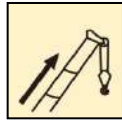
XCT25_M汽车起重机 / Truck Crane

产品简介

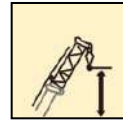
Brief introduction



25 t



34 m



43.2m



 **XCMG** | Machmall.com

Web: machmall.com

Tel: +86-516 8773 9797

Email: machmall@xcmg.com

 **XCMG**

XCT25_M广泛适用于油田、矿场、建筑工地、交通运输、港口、桥梁、沙漠施工等场所，起重性能、作业效率、操纵性、动力性和环境适应性行业领先。

XCT25_M is widely used for the lifting operations in general engineering projects, such as construction sites, transportation, ports, bridges, deserts, oilfields and mines, etc. Lifting capacity, efficiency, controllability, mobility and environment adaptation take the lead in the industry.



XCT25_M

- 四节 U型34米主臂，最大起重能力：25吨，最大起升高度：43.2米，最大工作半径：30米，性能全面领先
- 4-section boom of 34 m with U-type profile is adopted; the max. lifting load is 25 t; the max. working radius is 30 m; the performance takes the lead comprehensively. the max. lifting height is 43.2m;
- 丰富的工况适应性配置，满足所有油田、政府类工程要求
- Various adaptation configurations for different working conditions meet the requirements of projects such as oil fields and municipal constructions.
- 整机耐高温设计，许用环境温度达到60℃；匹配高防尘性能零部件，从容面对尘土飞扬和沙漠地区的恶劣工况。
- The entire machine is designed to endure high temperature, it is allowed to work in ambient temperature up to 60℃. With dust-proof parts equipped, the crane is applicable to applications in deserts.



XCT25_M







回转机构

Slewing mechanism

- 单排四点接触球外齿式回转支承，360度回转
- Single-row four-point ball contact external tooth slewing ring, may continuously slew 360°.
- 具有动力控制或自由回转的功能，可无级调速
- Power control and free-sliding function are available, and speed may be infinitely regulated
- 回转速度为0-3r/min
- Slewing speed: 0-3r/min



超强起重性能

Superb lifting performance

- 行业最长四节 34 米 “U 型” 主臂，主吊钩最大 10 倍率，性能领先同类产品 5~10%。
- 4-section boom of 34 m with U-type profile is the longest of the same class in the industry; the max. parts of line is 10 for the main hook block. The performance is 5~10% higher than that of the competitors.
- 创新单板臂头与紧凑式臂尾结构，搭接比行业最大，吊臂承载力更强。
- Innovative single-plate boom head and compact boom tail structure, best overlapping ratio in its class and stronger boom load-bearing capacity;



新型节能液压系统

New energy-saving hydraulic system

- 回转最低稳定速度达到 $0.1^{\circ}/s$ ，起升最低稳定速度（卷筒处） $2.5\sim 3.5m/min$ ，起吊精准，更加适合精准吊装作业；
- The min. stable slewing speed is $0.1^{\circ}/s$. The min. stable hoisting speed (drum) is $2.5\sim 3.5m/min$. Precise and safe lifting movements can be realized.
- 双泵分合流控制技术，复合动作性能行业最高，作业高效；
- Dual-pump separate and confluent control technology brings higher compound movement performance in the industry with higher working efficiency.

起升机构

Winch mechanism

- 定量泵-变量马达开式液压系统
- The open winch hydraulic system consisting of constant variable displacement pumps and variable displacement motors
- 行星齿轮减速器、常闭式制动器
- Planetary gear reducer, normally closed brake
- 最大单绳拉力为 27.6KN
- Max. single line pull is 27.6KN
- 最大起升速度 135m/min
- Max. hoisting speed is 135m/min



变幅机构

Elevating mechanism

- 单变幅油缸，可靠性高
- Single elevating cylinder, high reliability
- 使用带负载补偿功能的变幅平衡阀
- The elevating balance valve with load compensation function



动力传动系统

Drive train

- 上柴发动机，额定功率192kW，最大输出扭矩1000N.m
- Shanghai diesel engine, with rated power of 192kW, and max. torque of 1000N.m
- 陕齿机械8档变速箱，软轴操纵，全同步器
- Mechanical 8-speed transmission made by Shaanxi Gear Factory, with synchronizer. It is operated through flexible shaft.
- 最高车速85km/h，最大爬坡能力42%
- Max. travel speed is 85km/h, and max. grade ability is 42%.



低速大扭矩动力传动系统

Low-speed large-torque power drive system

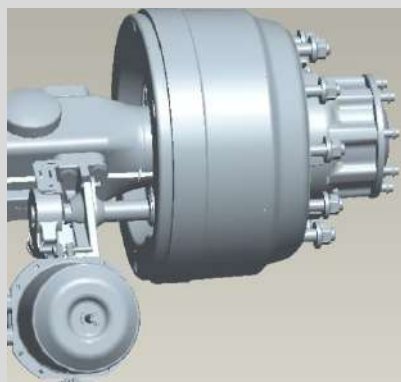
- 以低速大扭矩发动机和大速比变速箱为核心的全新动力平台，驱动性能强，承载能力高，稳定性好；
- The new power system consists of a low speed large torque engine and a transmission with high speed ratio contributes to strong driving performance, high load-bearing capacity and better stability.
- 实现了高动力性能与低油耗完美融合，行驶油耗降低12%，动力性能提高10%
- High power performance and low fuel consumption are perfectly combined, i.e. 12% reduction in fuel consumption for driving, and 10% improvement in power performance.



悬挂系统

Suspension system

- 前悬架采用少片变截面钢板弹簧
- Less leaf springs with tapered cross-section are adopted for front suspensions
- 后悬架采用钢板弹簧平衡梁加V型推力杆结构
- The rear suspension adopts leaf spring balance suspension with V-type push rods



制动系统

Brake system

- 脚踏板操纵的双回路气压制动。鼓式制动器
- Foot pedal operated double-circuit air pressure brake. Drum brake
- 驻车制动：放气制动，作用于2、3轴车轮。
- Parking brake: air-release brake, acting on wheels of axles 2-3.
- 辅助制动：发动机排气制动
- Auxiliary brake: engine exhaust brake.



工况自动规划技术

Automatic working condition planning technology

- 自动推荐最优工况
- Automatically recommend the most proper working conditions
- 简化查询与设置工况过程
- Searching and setting work condition simply



新型外观造型与人性化设计

New appearance and humanized design

- 新一代外观设计，整机刚劲有力，时尚的操纵室新外观，层次感与力量感完美结合；全面的人体工程学分析，人性化细节处理，打造驾驶轻松、操纵舒适，维护便捷的内在品质
- A new generation appearance design presents power and vigor, such as the appearance of operator's cab, delivering the feeling of perfect combination of streamlining and strength; with ergonomic analysis and personalized consideration of details integrated, a quality product is created that is convenient to maintain, easy to drive and comfortable to operate.



立体空调风道

Three dimensional air vents

- 立体式送风，流速更细腻，避免冷热不均。
- Three dimensional air supply, optimized flow rate, avoiding uneven heating and cooling.

软轴拨销机构，操纵室内即可完成回转锁止操作。

With flexible shaft pin puller device, slewing lock operation is available in operator's cab.



锁止
Slew



操纵室标配大功率制冷空调，提升空调制冷效果。

High-power air conditioner is available in the operator's cab with improved cooling effect.



高适应性部件

Parts with high adaptability

- 双级沙漠型空滤器，维护周期长。
- Two-stage desert air filter with long maintenance interval



新型外观造型与人性化设计

New appearance and humanized design

- 全覆盖式走台板，铝合金型材，品质感强，独立式轮包，层次丰富；
- Fully covered aluminum alloy deck, strong sense of quality; independent wheel fender, sense of plentiful layers;
- 铝型材防护栏，表面质量高、防腐性能强；
- Guard rails made of aluminum alloy, high quality and strong anti-corrosion capacity;
- 全新人机设计把手和扶梯，精良考究工艺制造，攀爬方便可靠。
- Ergonomically designed hand holds and hand rails, made by fine manufacture process, convenient and reliable for climbing.



高可靠性元器件

More reliable component

- 插插件防护等级达到IP67，行业最高。接插件内部带橡胶护套，防阳光直射、防沙尘，性能极佳
- For plug-ins, the degree of protection is IP67. There is rubber sheath in the plug-in to avoid direct sunlight and dust, contributing to good performance.



中东非洲地区适应性提升

Improved adaptation for Middle East and Africa region

- 不锈钢膨胀水箱
- Stainless steel expansion tank
- 大功率散热器
- Large power radiator
- 铝合金燃油箱
- Aluminum alloy fuel tank
- 铝合金贮气筒
- Aluminum alloy reservoir



驾驶室

Driver's cab

- 钢结构全宽豪华驾驶室，全封闭，密封性好，防腐蚀、软化内饰，装备豪华舒适。
- New full-dimension enclosed cab, luxury and comfort. It is designed to be leakproof, anti-corrosive and shockproof.
- 配置收放机、可调式座椅、简易卧铺、方向盘、安全玻璃、3只雨刷器、电动后视镜、电动门窗升降器、杂物箱。
- Equipped with radio player, adjustable seats, simple sleeper, steering wheel, safety glass, 3 wipers, electrical adjustable mirrors, electrically operated door window lifters and glove box.





徐工人机交互系统

XCMG man-machine interactive system

- 人机交互系统，实现了操作人员与起重机的友好对话。轻松掌控起重作业的各种状态信息，操纵更轻松、便捷
- Man-machine interactive system provides various working information for operator through establishing a friendly dialogue between operator and the crane, making the operation easier and convenient



操纵室

Operator's cab

- 全人机工学工作空间设计,作业更舒适,安全
- Ergonomically designed working space makes operation safer and more comfortable
- 5.7寸真彩色屏,提供卓越的视觉操作体验
- 5.7-inch color touch screen displays, provide excellent visual operation experience



- 安全保护、吊装动作、操纵环境三个区域,控制便捷
- Three control areas for safety protection, lifting operation and operating environment make control easier and more convenient