

徐工徐工 助您成功  
XCMG FOR YOUR SUCCESS



# XC958 轮式装载机

Wheel Loader



 [Machmall.com](http://Machmall.com)

Web: [machmall.com](http://machmall.com)  
Tel: +86-516 8773 9797  
E: [machmall@xcmg.com](mailto:machmall@xcmg.com)





## 产品简介 / Product Overview

- ▼ XC958轮式装载机是徐工集团充分利用徐工国际化研发平台，整合运用全球技术研发资源，全力打造具有国际先进水平、完全自主知识产权的全新一代装载机。该款机型动力强劲、坚固可靠、节能高效，安全舒适，保养便利，是各大港口、矿山、煤炭、工程建设等首选生产设备。

XC958 wheel loader is a new generation of loader. XCMG makes full use of Group's international R&D platform to integrate global technology research and development resources to create international advanced and completely independent intellectual property rights. This model is powerful, rugged, energy efficient, safe and comfortable, and easy maintenance and is the optimal choice for ports, mines, coals, and engineering construction and so on.

- ▼ XC958配置欧V排放的发动机，ZF 5WG210全自动变速箱，ZF湿式驱动桥，电液载荷感应液压系统。整机在可靠、节能、高效、舒适等方面具有显著优势，达到国际先进水平。

XC958 is equipped with Euro V emission engine, ZF 5WG210 automatic transmission, ZF wet drive axle, electro-hydraulic load sensing hydraulic system. The whole machine has significant advantages in terms of reliability, energy saving, high efficiency and comfort, and has reached the international advanced level.

## 性能特长 / Performance Highlights

- ▼ 牵引力达165kN，最大崛起力达175kN，三项和时间 $\leq 10s$ ，强劲、高效  
Traction traction can reach 165kN, maximum lifting force can reach 175kN, three items and time  $\leq 10s$ , strong and efficient.

- ▼ 根据物料及作业工况不同选配2.5~5.0m<sup>3</sup>铲斗，也可选配快换装置，实现不同铲斗、机具的快速切换，满足客户各种需求。  
The bucket can be equipped with a 2.5~5.0 m<sup>3</sup> bucket depending on the material and working conditions. It can also be equipped with a quick changer to quickly switch between different buckets and tools to meet the various needs of customers.





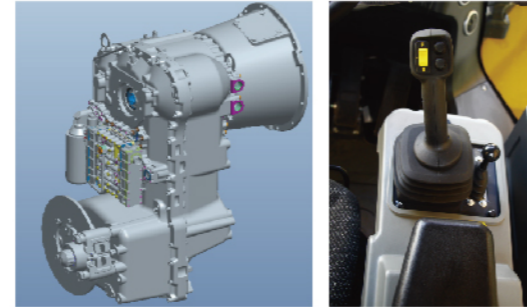
## 节能 高效 / Energy-Saving, and High Efficiency

应用行业最先进的节能技术：配备满足欧V排放标准的发动机、徐工专有发动机曲线，智能热管理系统，电液比例负载敏感液压系统等，单款产品组合应用节能效果均在15%以上。徐工专有发动机曲线，使用经济性提升3%；智能热管理系统应用超大散热器和自动无级调速的低速风扇，降低能耗损失的同时降低辐射噪音污染；电液载荷感应液压系统实现转向和工作装置动作时，油量供给的按需分配，同时，指令式控制，使操作人员工作更轻松并富有乐趣。

The most advanced energy-saving technology in the application industry: equipped with engines that meet Euro V emission standards, XCMG proprietary engine curves, intelligent thermal management systems, electro-hydraulic proportional load sensitive hydraulic system, etc., with a combination of energy-saving effects of more than 15%. The proprietary engine curve of XCMG, using economic efficiency of 3%; intelligent thermal management system uses ultra-large radiator and automatic stepless speed regulation low-speed fan to reduce energy loss while reducing radiation noise pollution; The load sensing hydraulic system is capable of dispensing the fuel supply as needed when the work unit is actuated. At the same time, command-based control makes the operator's work easier and more fun.

## 科学 可靠 / Scientific and reliable

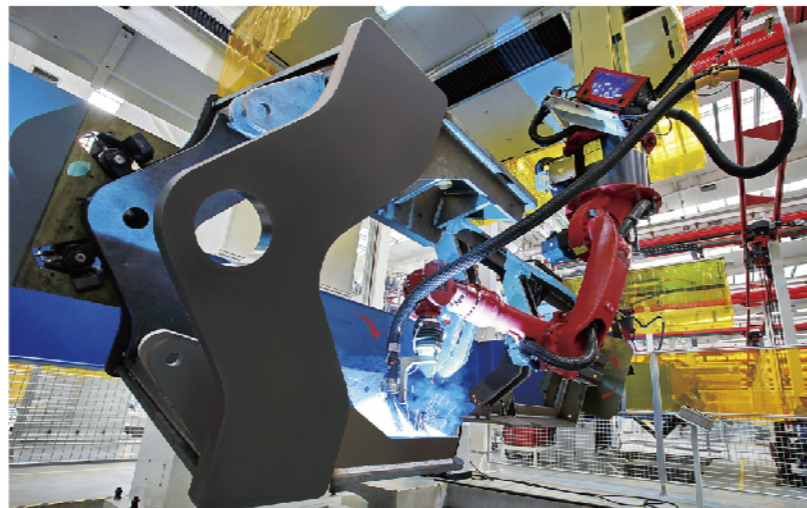
- ▼ 低噪音高扭矩发动机和大容量变矩器在低速行驶时保证效率最大化；配置国际领先的全自动电控变速箱，基于智能控制的自动换挡技术以传动效率最优的原则制定出合理的换挡策略，同时配合KD档及操纵手柄的FNR开关功能，既简化操作，又提升效率。全液压湿式制动桥(免维护)承载能力强，能更好适应各种恶劣工况环境。



Low noise, high torque engine and large capacity torque converter ensure maximum efficiency at low speed; equipped with international leading automatic electronically controlled gearbox, intelligent variable speed automatic transmission technology based on optimal transmission efficiency principle reasonable shifting strategy, combined with KD file And the FNR switch function of the joystick simplifies operation and improves efficiency. The fully hydraulic wet brake bridge (maintenance-free) has high load carrying capacity and is better suited to a variety of harsh operating conditions.

- ▼ 铰接大开档重载型结构件，应用有限元分析技术，减少应力集中；强大的加工制造能力，结构件采用机器人焊接，保证焊缝质量。

With large open heavy-duty structural parts, finite element analysis technology is used to reduce stress concentration; powerful processing and manufacturing capabilities, and structural parts are robot welded to ensure welding quality.



## 智能 / Intelligent



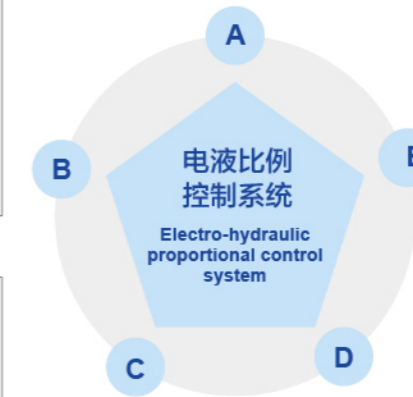
- ▼ 智能热管理系统的超大散热器+低速风扇可根据散热需求，自动无级调节转速，使整机快速达到并保持最优工作状态，降低能耗的同时减少噪声污染。风扇具有自动反转功能，实现高粉尘环境下的自清理。

The intelligent heat management system's large radiator + low-speed fan can automatically adjust the speed according to the heat dissipation requirements, so that the whole machine can quickly reach and maintain the best working condition, reduce energy consumption and reduce noise pollution. The fan has an automatic reversal function for self-cleaning in high dust environments.

- ▼ 电液比例负载敏感液压系统实现转向和工作装置动作时，油量供给的按需分配，同时，指令式控制，使操作人员工作更轻松并富有乐趣。Electro-hydraulic proportional load sensitive hydraulic system provides on-demand distribution of fuel supply during steering and work unit operation. At the same time, command-based control makes the operator's work easier and more fun.

**B** Auto限位: 实现对动臂高位、低位、铲斗回位的位置记忆,并能使工作装置自动快速运动至设定位置。  
Automatic position restriction: Realize the position memory of the boom high position, low position and bucket recovery position, so that the working device automatically moves to the set position automatically.

**C** 微动: 动臂举升与下放,能实现高精度微动控制,且不影响最大速度。  
Jog: Raise and lower the boom to achieve high precision jog control without affecting the maximum speed.



**A** 缓冲功能: 动臂启动、停止或接近限位时动作缓冲减速,防止冲击,避免产生剧烈振动。  
Buffering function: When the boom is activated, stopped or close to the limit, the action buffer is decelerated to prevent impact and avoid severe vibration.

**E** 平动举升: 此功能应用于多机具,比如货叉类机具,此功能工作时可以保持机具水平姿态平稳上升和下降。  
Level and lift: Most machines have this function, like forklift. With this function, the machine may maintain its horizontal attitude when it completes its lifting and descending operation.

**D** 自动放平: 实现工作装置在卸料后自动复位放平功能  
Automatic leveling: automatic reset and leveling of the working device after unloading

## 更智能 / Higher Intelligence

### 徐工智能管理系统 / XCMG's intelligent management system

#### 轻松驾驭 一手掌控 Easy to control and master

- ▼ 徐工智能管理系统是基于国三设备推出的，用户通过所持手机、PAD、电脑等设备，可实时掌握设备的运营、保养状况；通过数据采集及分析，实现对用户工程精准的评估，保障设备的最佳匹配。

Released on the basis of China-III equipment, the XCMG's intelligent management system enables the user to master the operation and maintenance status of the equipment via mobile phone, PAD, and computer and, by means of data acquisition and analysis, realize the accurate evaluation on user's project and guarantee the best matching of equipment.



- 优化设备匹配 Optimized equipment matching
- 提高生产效率 Enhanced productivity
- 提升管路效率 Increased pipeline efficiency
- 减少运营成本 Lowered operation cost
- 降低运营风险 Reduced operation risks
- 优化盈利能力 Optimized profitability



▼ 新型集成式FOPS&ROPS超静音、微增压驾驶室，内部超大空间，视野更开阔、操作更舒适，座椅、方向机均具有多项调节功能，稳定模块功能有效降低整机行驶颠簸，防止物料洒落，提高运输效率，提升驾驶舒适性。全系列产品人机交互通过JACK仿真技术推演，细至每个关节的运动轨迹都进行了潜心研究；在风场理论指导下布置的智能温控系统，驾乘舒适；过板防尘、密封降噪，确保恶劣环境下的清新作业空间。

The new integrated FOPS & ROPS ultra-quiet, miniature pressurized cab, large internal space, wider field of view, more comfortable operation; seat, steering machine with a number of adjustment functions; stability module function to effectively reduce the impact of the machine operation, prevent material spillage Improve transportation efficiency and improve driving comfort. JACK simulation technology is used to derive the human-computer interaction of the whole series of products, and the trajectory of each joint is deeply studied. The intelligent temperature control system arranged under the guidance of wind field theory is comfortable to drive; the circuit board is dust-proof and sealed. Noise reduction ensures a clean working space in harsh environments.



方便 / Convenience

- ▼ 全新数字化组合仪表，车辆运行状态和各类信息一目了然；  
The new digital combination meter, the vehicle running status and various types of information at a glance;
- ▼ 侧翻式驾驶室和大角度整体后翻式发动机罩，可以使各关键的零部件充分展示出来，方便保养和维护；  
Side-turn cab and large-angle integral rear steering hood for complete display of all key components for easy maintenance and service;
- ▼ 单排大间距散热器，可上翻的后挡罩；  
Single row of large tone radiators, upturned back cover;
- ▼ 车架侧部的超大维修窗口等均为用户提供一流的设备维修性；  
A large maintenance window on the side of the frame provides users with first-class equipment maintainability;
- ▼ 前后车架，以及配重上均在合适位置设置爬梯，方便使用；  
Ladders are placed at appropriate locations on the front and rear frames and counterweights for ease of operation;
- ▼ 合理引出的放油、防水装置，合理布置的测压点，方便日常维修保养和检测。  
Reasonable extraction of oil drain and oil drain devices, reasonable pressure measurement points for routine maintenance and testing.



数字化组合仪表  
Digital combination appearance



驾驶室侧翻  
Cab rollover



机罩后翻  
Hood back

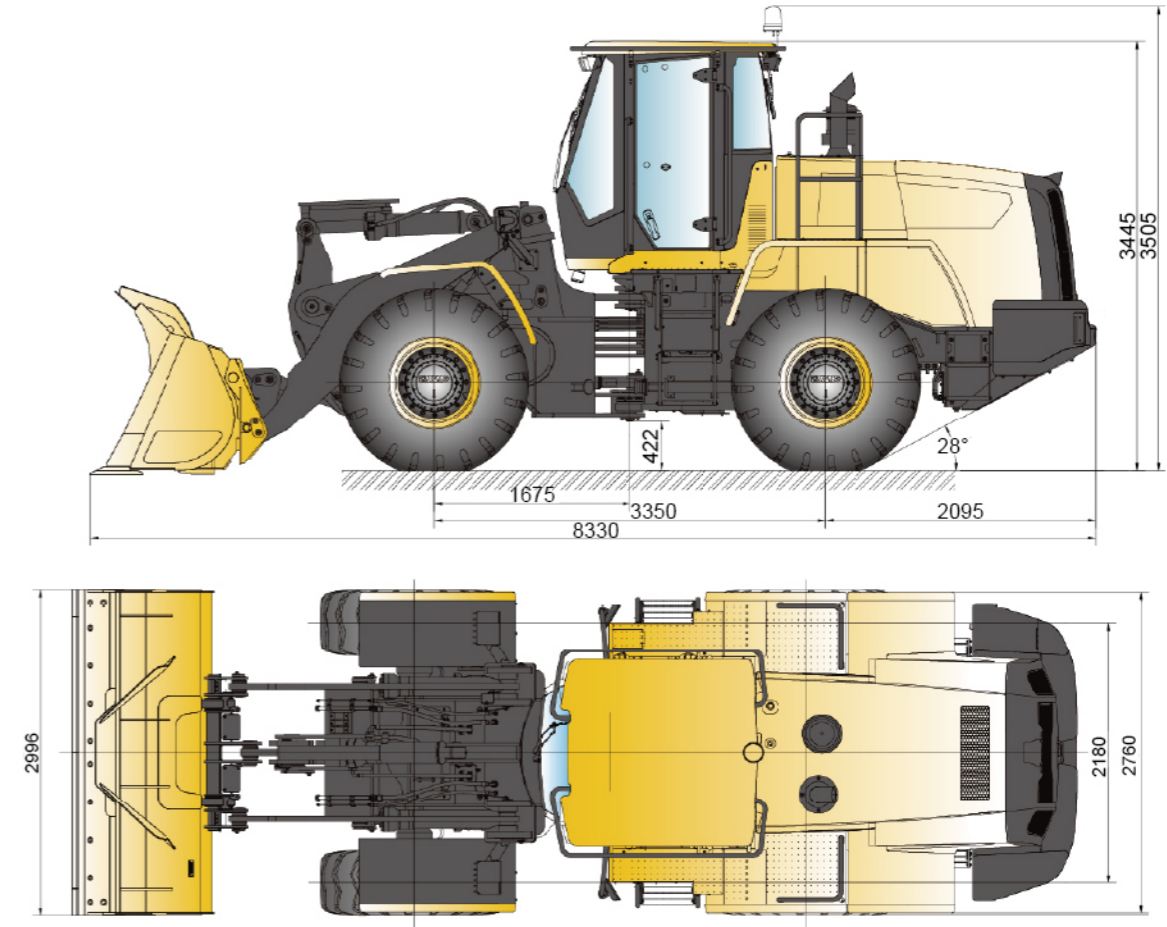


集中测压  
Centralized pressure measurement



集中放水、放油  
Concentrated water and oil release

外形尺寸 / Outline dimensions



主要参数 / Main specifications

项目	Description	参数 Specifications	单位 Unit
额定斗容量	Rated bucket capacity	2.5-5.0	m <sup>3</sup>
整机工作质量	Operating mass	18000	kg
卸载高度	Dumping height	3100	mm
卸载距离	Dumping reach	1100	mm
整机长度	Overall length	8330	mm
整机高度	Overall height	3445	mm
铲斗宽度	Bucket width	2996	mm
最大掘起力	Maximum breakout force	175	kN
最大牵引力	Maximum traction force	165	kN
三项和时间	Total cycle time	<10	s
发动机标定功率	Engine rated power	168	kW
行驶速度	前进 I/II/III/IV/V 档	Drive gear I/II/III/IV/V	7/12/18/28/40
	后退 I/II/III 档	Reverse gear I/II/III	7/12/18