



XZJ5312TFC (XF1003) Slurry Sealer

# Technical Specification

XUZHOU CONSTRUCTION MACHINERY  
GROUP CO., LTD.

# CONTENTS

1. Overview .....	3
1.概述 .....	3
2. Executive Laws, Rules, Safety Standards and Product Standards.....	3
2.产品执行的法律、法规、安全标准和产品标准 .....	4
3 Main performance and characteristics.....	4
3 主要性能与特点 .....	5
4 Main technical parameters .....	6
4 主要技术参数 .....	7
4.2 List of main parts and components.....	8
4.2 主要配套件明细 .....	10
5. Features of main structure(system) .....	11
5 主要结构（系统）特点 .....	12
5.1 Chassis system .....	12
5.1 底盘系统 .....	13
5.2 Aggregate system .....	13
5.2 骨料系统 .....	13
配置低料位传感器，具有缺料报警功能 .....	14
5.3 Emulsified asphalt system.....	14
5.3 乳化沥青系统 .....	14
5.4 Power system .....	15
5.4 动力系统 .....	15
5.5 Control System.....	15
5.5 控制系统 .....	16
5.6 Packing system.....	16
5.6 填料系统 .....	16
5.7 Mixer .....	17
5.7 搅拌器 .....	17
5.8 Water supply system.....	17
5.8 供水系统 .....	18
5.9 Additive system.....	18

5.9 添加剂系统.....	18
5.10 Spreader box.....	18
5.10 摊铺箱.....	19
5.11 Hydraulic system.....	19
5.11 液压系统.....	20
6 Transport safety requirements .....	20
6 运输安全要求.....	21
用户或使用单位在转场时应确保的要求: .....	21
7. Construction Case .....	21
7 产品施工案例.....	21
8. Disclaimers.....	22
8 声明.....	22

# XZJ5312TFC (XF1003) Slurry Sealer

## Technical Specification

### XZJ5312TFC (XF1003) 稀浆封层车

### 技术规格书

#### 1. Overview

XZJ5312TFC (XF1003) micro-surfacing/slurry sealer is mainly used for functional layer construction of new asphalt pavement (top seal layer, sub-seal layer), maintenance construction of each grade asphalt pavement (slurry seal, the micro-surfacing) and rut repair; It has the characteristics of high construction efficiency, good construction quality, convenient operation and high reliability.

#### 1.概述

XZJ5312TFC (XF1003) 微表处/稀浆封层车主要应用于新建沥青路面的功能层施工（上封层、下封层）、各等级沥青路面养护施工（稀浆封层、微表处）以及车辙修复；具有施工效率高，施工质量好，操作方便，可靠性高的特点。

#### 2. Executive Laws, Rules, Safety Standards and Product Standards

In the process of product design, strictly abide by the “Standardization Law”, “Product Quality Law”, “Measurement Law”, “Standardized Review and Management Methods for New Mechanical and Electrical Product”, “Enterprise Standardization Management Method” and “Environmental Protection Law” and other laws and regulations.

This product executes and complies with the following relative standards:

GB/T 25649 Road Construction and Maintenance Machinery Equipment - Slurry Sealer

GB16735 Road vehicle — Vehicle identification number (VIN)

GB 7258 Safe Specification for Motor Vehicles Operating on Roads

GB4785 Prescription for installation of the external lighting and light signaling devices for motor vehicles and their trailers

GB11567 Motor vehicles and trailers-lateral and rear underrun protection requirements

GB15084 Motor vehicles — Rear view mirrors — Requirements of performance and installation

GB1589 Limits of dimensions, axle load and masses for road vehicles

GB23254 Retro-reflective markings for trucks and trailers

GB15741 The license plates (crackets) and its position on motor vehicles and trailer

GB25990 Rear-marking plates for vehicles and their trailers

## 2.产品执行的法律、法规、安全标准和产品标准

在产品的设计过程中，严格遵守《标准化法》、《产品质量法》、《计量法》、《机电新产品标准化审查管理办法》、《企业标准化管理办法》和《环境保护法》等法律法规。

本产品执行并符合以下相关标准：

GB/T 25649 《道路施工与养护机械设备稀浆封层机》

GB16735 《道路车辆车辆识别代号（VIN）》

GB 7258 《机动车运行安全技术条件》

GB4785 《汽车及挂车外部照明和信号装置的安装规定》

GB11567 《汽车及挂车侧面和后下部防护要求》

GB15084 《机动车辆后视镜的性能和安装要求》

GB1589 《道路汽车外轮廓尺寸、轴荷及质量限值》

GB23254 《货车及挂车车身反光标识》

GB15741 《汽车和挂车号牌板（架）及其位置》

GB25990 《车辆尾部标志板》

## 3 Main performance and characteristics

- ◆ Equipped with manual, semi-automatic and automatic three kinds of working modes, intelligent control, one click material discharging, real time parameter display, shortage alarm function, and storage of multiple construction calibration data.
- ◆ Large storage capacity, full capacity of aggregate silo is 12m<sup>3</sup>, asphalt tank and water tank are 4000l each. High construction efficiency.
- ◆ 300l environmental engineering plastic additives tank, constant gear pump, stable conveying, accurate measurement, high precision.
- ◆ Chinese asphalt pump, smooth and stable transportation, heated by chassis engine cooling water, effectively prevent the asphalt solidification inside the pump.

- ◆ Large capacity double shaft horizontal mixer, high slurry productivity, mix evenly without dead angle, replaceable wear-resistant blade, long service life.
- ◆ The hydraulic telescopic paving box has secondary scraping function, high pavement flatness after paving and can be equipped with an optional track paving box.
- ◆ Configured with high pressure cleaning gun, may at any time to clean the road or construction parts
- ◆ Equipped with 93kW Dongfeng Cummins engine, strong power and stable construction performance.
- ◆ Imported hydraulic system, using load sensitive pump, valve group, high reliability, low energy consumption, low heat emission.
- ◆ SINOTRUCK HOWO 31T 8 x 4 drive chassis (type: ZZ1317N3867E1H), equipped with the China-V engine, D10.31-50 type, 228 kw/1900 r/min, with a two-stage gearbox, the minimum stable speed is 1.5km/h, suitable for low-speed construction and high-speed transitions
- ◆ The rear console is equipped with a PTO remote electronic throttle, which can adjust the speed of the chassis at any time according to the construction conditions.
- ◆ The operation panel is divided into two parts, and the regulation control of the preparation and construction process are partition set to facilitate the operation.
- ◆ The computer RIMS platform based on GPS remotely monitors the important construction information and positioning of the whole vehicle.
- ◆ The mobile APP can monitor the important construction data, positioning and driving trajectory of the vehicle in real time.
- ◆ Vehicle traveling data recorder is equipped to record the information in traveling process in real time
- ◆ Optional fiber shearing system, storage of 4 rolls of fiber (8.3km per roll), 4 independent controlled shear units.

### 3 主要性能与特点

- ◆ 配有手动、半自动和全自动三种工作模式，智能控制，一键出料，工作参数实时显示，具备缺料报警功能，存储多个施工标定数据
- ◆ 料仓容积大，骨料仓满装 12m<sup>3</sup>，沥青箱、水箱各 4000L，施工效率高
- ◆ 300L 环保工程塑料添加剂罐，定量齿轮泵，输送平稳，计量精确，精度高

- ◆ 国产沥青泵，输送平稳，采用底盘发动机冷却水加热，有效防止泵内沥青凝固
- ◆ 大容量双轴卧式搅拌器，稀浆生产率高，搅拌均匀无死角，可更换的耐磨叶片，使用寿命长
- ◆ 液压伸缩摊铺箱，具有二次刮平功能，摊铺后路面平整度高，可选配车辙摊铺箱；
- ◆ 配置高压清洗水枪，可随时清洗路面或施工部件
- ◆ 上装配置 93kW 东风康明斯发动机，动力强劲，施工性能稳定
- ◆ 进口液压系统，采用负载敏感泵、阀组，可靠性高，能耗低，发热量小
- ◆ 中国重汽豪沃 31T 的 8×4 驱动底盘（型号：ZZ1317N3867E1H），配置国 V 排放发动机，型号 D10.31-50，功率 228kW/1900r/min，加装二级变速箱，最低稳定车速 1.5km/h，可低速施工，高速转场
- ◆ 后操作台配置 PTO 远程电子油门，可根据施工情况随时调节底盘行驶速度
- ◆ 操作面板分为前后两个区，将施工前准备操作和施工过程中的调节控制分区设置，方便操作
- ◆ RIMS 平台基于 GPS 远程监控整车重要施工信息及定位
- ◆ 用户登陆手机 APP 可实时监控整车重要施工数据、定位和行驶轨迹
- ◆ 配置行驶记录仪，实时记录行驶过程信息
- ◆ 可选配纤维剪切系统，存放 4 卷纤维（每卷 8.3km），4 个剪切单元独立控制

#### 4 Main technical parameters

##### 4.1 Technical parameters table

Item	Unit	Parameters
Product model	-	XZJ5312TFC （XF1003）
<b>Working performance parameter</b>		
Silo volume	m <sup>3</sup>	10(maximum 12)
Asphalt tank capacity	L	4000
Water tank capacity	L	4000
Volume of the stuffing box	L	800(2×400)
Additive volume	L	300
Volume of fibre box	roll	4（Option, 8.3km per roll）
Paving width	m	2.4 -4.2
Paving thickness	mm	3 -15
Working speed	km/h	1.5-3
<b>Chassis performance parameter</b>		

Type	-	HOWO ZZ1257N4347E1 (China-V)
Engine type	-	D10.31 -50
Engine power	kW/r/min	228 / 1900
Driving type	-	8×4
Emission standard	-	China Stage V
Maximum traveling speed	km/h	102
<b>Up-mounted engine parameter</b>		
Type	-	Dongfeng Cummins QSB3.9-C125-30
Power	kW/r/min	93/2200
<b>Overall dimension parameter</b>		
Minimum ground clearance	mm	380
Approach Angle/Departure Angle	°	14 / 10
Overall dimension(length× width× height)	mm	11850×2496×3490
<b>Mass</b>		
Fuel tank	L	400
Curb weight	kg	20500
Total mass	kg	31000

#### 4 主要技术参数

##### 4.1 技术参数表

项 目	单 位	参 数
产品型号	-	XZJ5312TFC (XF1003)
<b>作业性能参数</b>		
骨料仓容积	m <sup>3</sup>	10 (最大 12)
沥青罐容积	L	4000
水箱容积	L	4000
填料箱容积	L	800 (2×400)
添加剂容积	L	300
纤维箱容量	卷	4 (选配, 每卷 8.3km)
摊铺宽度	m	2.4-4.2
摊铺厚度	mm	3-15
工作速度	km/h	1.5-3
<b>底盘性能参数</b>		
型号	-	重汽豪沃 ZZ1317N3867E1H (国 V)



发动机型号	-	D10.31-50
发动机功率	kW/r/min	228/1900
驱动型式	-	8×4
排放标准	-	国 V
最高行驶速度	km/h	102
<b>上装发动机参数</b>		
型号	-	东风康明斯 QSB3.9-C125-30
功率	kW/r/min	93/2200
<b>整机尺寸参数</b>		
最小离地间隙	mm	380
接近角/离去角	°	14/10
外形尺寸（长×宽×高）	mm	11850×2496×3490
<b>质量参数</b>		
燃油箱	L	400
整备质量	kg	20500
总质量	kg	31000

#### 4.2 List of main parts and components

No.	System name	Parts name	Quantity	Brand
1	Chassis system	Chassis	1	HOWO SINOTRUCK
2	Power system	Up-mounted engine	1	Dongfeng Cummins
3	Asphalt system	Asphalt pump	1	Liaoning
4	Water system	Working pump	1	He'nan
5		High pressure water pump	1	Heimao Suzhou
6		Liquidometer	1	Qiuxin, Wuxi
7	Aggregate system	Reducer	1	Hangzhou Jiepai
8	Packing system	Reducer	2	SEW
9	Additive system	Additive pump	1	Botou Liheng
10	Gas circuit system	Pneumatic component		Ningbo EMC (kai pu)
11	Hydraulic	Hydraulic pump	1	DANFOSS

12	system	Hydraulic valve group	2	DANFOSS
13		Hydraulic oil return filter	1	Argo-Hytos
14		Hydraulic oil cylinder	5	Hefei Changyuan
15		Mixing motor	1	Intermot
16		Aggregate/stuffing/high pressure water pump motor	4	DANFOSS
17		Paving box / asphalt pump motor	3	Eaton
18		Water pump/additive motor	2	Hefei Changyuan
19	Electrical system	Controller	1	Shanghai Hongying
20		Display	1	Shanghai Hongying

## 4.2 主要配套件明细

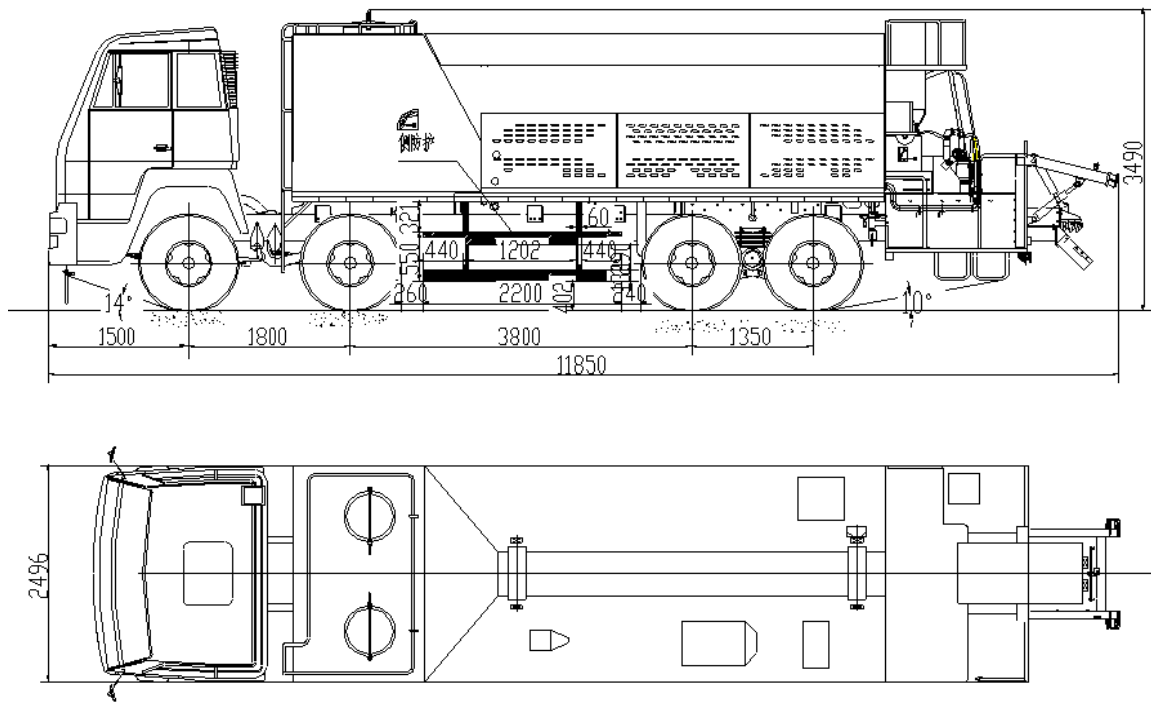
序号	系统名称	零部件名称	数量	品牌
1	底盘系统	底盘	1	中国重汽豪沃
2	动力系统	上装发动机	1	东风康明斯
3	沥青系统	沥青泵	1	辽宁
4	水路系统	工作水泵	1	河南
5		高压水泵	1	苏州黑猫
6		流量计	1	无锡求信
7	骨料系统	减速机	1	杭州杰牌
8	填料系统	减速机	2	德国赛威 SEW
9	添加剂系统	添加剂泵	1	泊头利恒
10	气路系统	气动元件		宁波亿太诺（锴濮）
11	液压系统	液压泵	1	丹麦丹佛斯 Danfoss
12		液压阀组	2	丹麦丹佛斯 Danfoss
13		液压回油过滤器	1	德国雅歌辉托斯 Argo-hytos
14		液压油缸	5	合肥长源
15		搅拌马达	1	意大利英特姆 Intermot
16		骨料/填料/高压水泵马达	4	丹麦丹佛斯 Danfoss
17		摊铺箱/沥青泵马达	3	美国伊顿 Eaton
18		水泵/添加剂马达	2	合肥长源
19	电器系统	控制器	1	上海宏英
20		显示器	1	上海宏英

## 4.3 Appearance and overall dimension (unit: mm)

XZJ5312TFC (XF1003) slurry sealer product appearance and dimensions (without paving box):

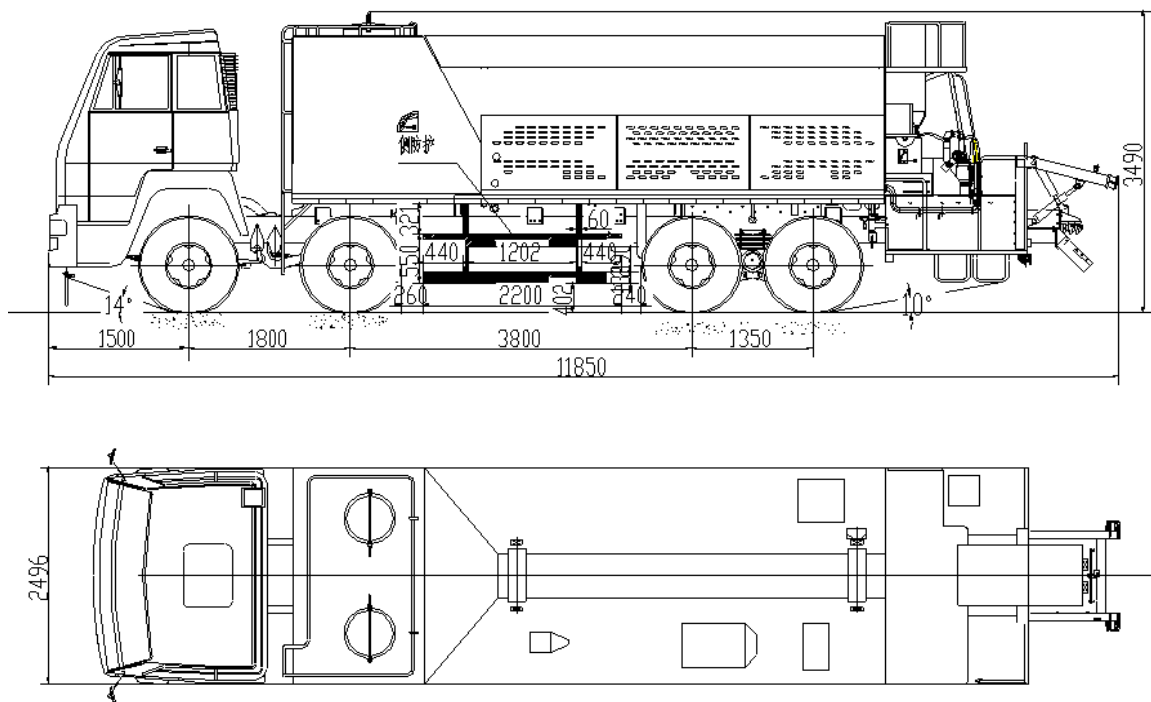
### 4.3 外形及外形尺寸（单位：mm）

XZJ5312TFC（XF1003）稀浆封层车产品外形及外形尺寸（去摊铺箱状态）：



##### 5. Features of main structure(system)

XZJ5312TFC (XF1003) Slurry sealer mainly includes chassis system, aggregate system, emulsified asphalt system, power system, control system, packing system mixer, water supply systems, additives system, paving box, hydraulic system and other parts.



## 5 主要结构（系统）特点

XZJ5312TFC（XF1003）稀浆封层车主要有底盘系统、骨料系统、乳化沥青系统、动力系统、控制系统、填料系统、搅拌器、供水系统、添加剂系统、摊铺箱、液压系统等部分组成。

### 5.1 Chassis system

- ◆ Sinotruk Howo 31T 8 x 4 drive chassis (ZZ1317N3867E1H), equipped with the China-V engine, D10.31-50 type, 228 kw/1900 r/min
- ◆ Equipped with HW15710C gearbox, ST16 hub reducer double axles, suitable for complex road surface.
- ◆ Equipped with a two-stage gearbox, with the minimum stable speed of 1.5km/h, and good low-speed working performance meets the construction requirements; The maximum driving speed is 90km/h, fast transport speed and high working efficiency.
- ◆ Configured with PTO remote electronic throttle, backstage operator can adjust construction speed at any time according to the mixture volume of paving box, and reduce the construction quality problems due to the noisy environment and poor coordination between driver and operator.
- ◆ Equipped with air conditioning, single berth, ABS anti-lock system.

## 5.1 底盘系统

- ◆ 选用中国重汽豪沃 31T 的 8×4 驱动底盘 (ZZ1317N3867E1H), 配置国 V 排放发动机, 型号 D10.31-50, 功率 228kW/1900r/min
- ◆ 配置 HW15710C 变速箱, ST16 轮边减速双联桥, 适合工地复杂路面行驶
- ◆ 加装二级变速箱, 最低稳定车速 1.5km/h, 可低速施工, 高速转场加装二级分动箱, 最低稳定车速 1.5km/h, 低速行走性能好, 满足施工要求; 最高行驶速度 90km/h, 转场速度快, 工作效率高
- ◆ 配置 PTO 远程电子油门, 后台操作手可根据摊铺箱中混合料多少随时调节施工车速, 减少了在嘈杂环境中因操作手与司机配合不畅而产生的施工质量问题
- ◆ 配置冷暖空调, 单卧铺, ABS 防抱死系统

## 5.2 Aggregate system

- ◆ Full capacity of aggregate silo is 12m<sup>3</sup>, large capacity, can reduce the stop time and transverse joint numbers, high efficiency and good construction effect.
- ◆ 54 °sidewall, convenient for aggregate sliding, no material deposit
- ◆ In the middle of the aggregate silo equipped with a vibrating beam and a high frequency electronic vibrator to avoid the slipping due to excessive load of the belt and aggregate looseness, thus improving the stability of the aggregate transport.
- ◆ Continuous belt conveyor, anti - off tracking - drive drum, can be easily tensioned.
- ◆ Drawer type belt frame, easy to assemble and disassemble, convenient to maintain.
- ◆ Manual adjusting material door, easy to adjust the aggregate supply quantity, meet different construction requirements, high reliability.
- ◆ The speed of the belt is measured by the speed sensor, and the aggregate supply is measured accurately.
- ◆ Equipped with low material level sensor, material shortage alarm function.

## 5.2 骨料系统

- ◆ 骨料仓满装 12m<sup>3</sup>, 容积大, 可减少往返拉料时间以及摊铺过程中横向接缝次数, 工作效率高、施工效果好
- ◆ 采用 54°倾角侧壁, 方便骨料滑落, 不积料
- ◆ 骨料仓中部配置震动梁, 并装有高频电子震动器, 避免皮带承载过大出现打滑及骨料蓬架现象, 提高了骨料输送的稳定性

- ◆ 采用连续皮带输送，防跑偏驱动滚筒，可方便张紧
- ◆ 抽屉式皮带架，便于安装和拆卸，维修方便
- ◆ 手动调节料门，可方便调节骨料供料量，满足不同施工要求，可靠性高
- ◆ 通过转速传感器测量皮带转速，精确计量骨料供料量，实现骨料的精确控制  
配置低料位传感器，具有缺料报警功能

### 5.3 Emulsified asphalt system

- ◆ 4000L large capacity of asphalt tank can reduce transport time, high efficiency.
- ◆ Equipped with inspection hole, liquid level pointer, discharging mouth, cleaning mouth and suction pipe.
- ◆ Chinese brand asphalt pump has large diameter, low speed and a special clearance in order to prevent the destruction of emulsified asphalt structure, with insulation jacket, using chassis engine coolant for heat preservation, independent cleaning oil cup of asphalt pump at asphalt inlet, easy to wash pump body after operation in a timely manner, improve the service life of pump.
- ◆ There are two ways of asphalt filling: tank top cover filling and asphalt pump self-priming asphalt.
- ◆ The US Eaton hydraulic motor drive asphalt pump, the rotational speed is stable, the asphalt supply quantity is stepless adjusted, the operation is accurate and convenient; The speed sensor is used to measure the speed of asphalt pump, which can accurately measure asphalt supply.

### 5.3 乳化沥青系统

- ◆ 沥青罐容积 4000L，容量大，减少往返时间，工作效率高
- ◆ 配有检查孔、液位指针、清空口、清洗口及吸入管
- ◆ 国产沥青泵，大口径，低转速并有特殊的间隙以防止破坏乳化沥青结构，带保温夹套，利用底盘发动机冷却液保温，在沥青进口处安装独立的沥青泵清洗油杯，便于作业完成之后及时清洗泵体，提高泵的使用寿命
- ◆ 可选两种方式注入沥青：罐体顶盖注入、沥青泵自吸加注沥青
- ◆ 美国进口伊顿 Eaton 液压马达驱动沥青泵，转速输送平稳，无级调节沥青供应量，操作准确方便；转速传感器测量沥青泵转速，可精确计量沥青供料量

#### 5.4 Power system

- ◆ The configuration of the engine provides the power for up-mounted parts, so that the working system is not affected by the speed of the chassis engine, stable operation.
- ◆ QSB3.9 - C125-30 Dongfeng Cummins engine, fulfills the stage III emissions standards, air inter-cooled turbocharged, rated power of 93 kW / 2200 r/min, powerful and reliable performance
  - ◆ Denmark Danfoss series pump provides independent power source for each execution system.
- ◆ The main hydraulic components of the whole machine adopt foreign famous brand products, which provides guarantee for the system reliability.

#### 5.4 动力系统

- ◆ 配置上装发动机为各上装部件提供动力，使工作系统不受底盘发动机转速影响，工作稳定
- ◆ 采用东风康明斯 QSB3.9-C125-30 发动机，国III排放标准，涡轮增压、空空中冷，额定功率 93 kW/2200r/min，动力强劲，性能可靠
  - ◆ 液压动力部分采用丹麦丹佛斯串联泵，为各执行系统提供独立的动力源
- ◆ 整机主要液压元件均采用国外知名品牌产品，为系统可靠性提供了保障

#### 5.5 Control System

- ◆ The operation panel is divided into two parts, and the regulation control of the preparation and construction process are partition set to facilitate the operation.
- ◆ Store multiple construction calibration data
- ◆ Equipped with manual, semi-automatic and automatic three working modes, intelligent control, one key output, namely one switch can control the discharging and stop of aggregate, emulsified asphalt, water, additives, filler.
- ◆ Can realize the delay control, the user can adjust the material order according to the demand.
- ◆ Working parameters real-time display
- ◆ Material shortage alarm function
- ◆ The computer RIMS platform based on GPS remotely monitors the important construction information and positioning of the whole vehicle.



- ◆ The mobile APP can monitor the important construction data, positioning and driving trajectory of the vehicle in real time.
- ◆ Vehicle traveling data recorder is equipped to record the information in traveling process in real time

## 5.5 控制系统

- ◆ 操作面板分为前后两个区，将施工前准备操作和施工过程中的调节控制分区设置，方便操作
- ◆ 可以存储多次施工标定数据
- ◆ 配有手动、半自动和全自动三种工作模式，智能控制，一键出料，即一个开关可实现骨料、乳化沥青、水、添加剂、填料的出料和停止
- ◆ 可实现延时控制，用户可根据需求，调节各物料出料顺序
- ◆ 工作参数实时显示
- ◆ 具备缺料报警功能
- ◆ RIMS 平台基于 GPS 远程监控整车重要施工信息及定位
- ◆ 用户登陆手机 APP 可实时监控整车重要施工数据、定位和行驶轨迹
- ◆ 配置行驶记录仪，实时记录行驶过程信息

## 5.6 Packing system

- ◆ Two kinds of steep bunker wall can be added at the same time by using two kinds of medium. The volume of stuffing box is 800L (2 x 400L).
- ◆ The built-in ripper and screw feeder ensure the stability of the material discharging and meet the requirements of precision.
- ◆ Hydraulic motor drive, famous brand reducer drive, can stepless control the feeding speed.
- ◆ The speed sensor is used to measure the speed of the spreader precisely, console control is convenient to adjust the feeding volume.
- ◆ Two sets of independent transmission system, can realize all kinds of proportioning of two kinds of medium, flexible and able to spread the colored pavement.

## 5.6 填料系统

- ◆ 采用两厢陡峭仓壁，可以同时添加两种填料介质，填料箱容积为 800L (2×400L)
- ◆ 内置疏松器及螺旋送料器，确保出料稳定，满足精确的使用要求

- ◆ 液压马达驱动，知名品牌减速机传动，可无级控制供料速度
- ◆ 通过转速传感器精确计量布料器转速，操作台控制可方便调节供料量
- ◆ 两套独立传动系统，可以实现两种填料介质的各种配比，可以灵活调配，可铺彩色路面

## 5.7 Mixer

- ◆ Double shaft forced mixer, the best mixing effect of the blade installation angle, ensure the mixing uniformity.
- ◆ The surface special treatment of high wear resistant blades, long service life, good interchangeability, easy to replace.
- ◆ The lift cylinder can be used to adjust the angle of the discharging with the inclination of the road, suitable for the slope construction.
- ◆ Equipped low speed and high torque reversible motor, which is powerful, easy to maintain and repair.
- ◆ The cylindrical inner wall makes the mixture uniform and free of dead angle.

## 5.7 搅拌器

- ◆ 双轴强制式搅拌器，最佳拌合效果的叶片安装角度，确保拌合均匀
- ◆ 表面特殊处理的高耐磨叶片，使用寿命长、互换性好、更换方便
- ◆ 提升油缸，可使出料角度随路面倾角调节，适合坡道施工
- ◆ 配置低速大扭矩马达驱动，动力强，便于维护修理，可正反转
- ◆ 圆筒状箱体内壁，使得出料拌和均匀，无死角

## 5.8 Water supply system

- ◆ The water tank has a capacity of 4000L, with large capacity and anti-rust treatment of the inner wall, the add more cleaning mouths with filter and liquid level pointer.
- ◆ Chinese famous brand centrifugal pump (imported brand as option), rate of flow 30m<sup>3</sup>/h, large flow, high reliability.
- ◆ The waterway circuit is controlled by the air control angle seat valve, the water supply is controlled by electronic switch.
- ◆ The metal rotor flowmeter is used for easy observation and accurate measurement.
- ◆ With the road sprinkler system, the nozzle is set on the upper part of each tire, which can effectively prevent the asphalt from adhering to the tire in the construction process, and

can also reduce the cooling of the tire in the long-distance transportation.

- ◆ The high pressure water pump is equipped with high pressure water flow, equipped with a coil pipe, the working parts can be easily cleaned after construction; The control console is equipped with a low pressure water spray gun.
- ◆ Stainless steel hard pipe, valve, with filter, easy to clean.

## 5.8 供水系统

- ◆ 水箱容积 4000L，容量大，内壁防锈处理，增加清洗口，带滤网及液位指针
- ◆ 国内知名品牌离心水泵（可选配进口离心水泵），流量 30m<sup>3</sup>/h，流量大，可靠性高
- ◆ 水路回路采用气控角座阀控制，供水由电子开关控制，自动化程度高
- ◆ 采用金属转子流量计，方便观察且可在控制器显示，计量精确
- ◆ 配有路面洒水系统可预湿路面，喷嘴设置在各轮胎上部，能有效防止施工过程中沥青粘附轮胎，也可在长途转场运输时，对轮胎洒水降温
- ◆ 配置高压清洗水泵提供高压水流，配有盘管器，施工结束后可方便清洗工作部件；操作台配置低压补水喷枪
- ◆ 不锈钢硬管、阀门，带过滤器，方便清洗

## 5.9 Additive system

- ◆ 300L additive engineering plastic tank, large capacity, corrosion resistance.
- ◆ Quantitative gear pump ensures smooth conveying, accurate measurement, high precision.
- ◆ Accurate measurement with distance sensor, accurate transmission flow measurement, electric control valve, easy to control.

## 5.9 添加剂系统

- ◆ 300L 添加剂工程塑料罐体，容量大，耐腐蚀
- ◆ 输送采用定量齿轮泵，输送平稳，计量精确，精度高
- ◆ 采用距离传感器精确测速，输送流量计量精确，电控阀门控制通断，控制方便

## 5.10 Spreader box

- ◆ The hydraulic telescopic spreader box, paving width can be adjusted between 2.4 and 4.2m by adding and reducing lengthening section.
- ◆ Imported hydraulic motor drive, the speed is stable, the speed and rotation direction can be adjusted freely, strong power, can meet the different construction process

requirements.

- ◆ The double-row screw feeder is used for reverse feeding and left-right symmetrical segregation, forming a circulating feeding system, which is good for separating materials and has a secondary mixing effect to prevent segregation of the slurry and high evenness of the paving surface
- ◆ Spiral blade and piston shoes are all made of wear resistant material; Long service life, easy to replace.
- ◆ Wear-resistant rubber scraper, long service life, good scraping effect.
- ◆ Secondary scraping function, high pavement flatness after paving.
- ◆ The spreader box can swing to left and right according to the need of special road conditions.
- ◆ The paving thickness can be adjusted within 3-15mm by lifting lever, and the appropriate crown can be adjusted according to the road construction.
- ◆ Can be equipped with a rutted spreader box to carry out rut repair work.

#### 5.10 摊铺箱

- ◆ 液压伸缩式摊铺箱，通过增减加长节可实现摊铺宽度在 2.4-4.2m 范围内调节
- ◆ 进口液压马达驱动，转速平稳，转速与旋转方向可随意调节，动力强劲，可满足不同施工工艺要求
- ◆ 双排螺旋布料器反向输料、左右对称分料，形成循环输料系统，分料效果好，且具有二次搅拌作用，防止浆料离析，摊铺面平整度高
- ◆ 螺旋叶片与滑靴均采用耐磨材料处理而成；使用寿命长，更换方便
- ◆ 耐磨橡胶刮板，使用寿命长，刮平效果好
- ◆ 具有二次刮平功能，摊铺后路面平整度高
- ◆ 摊铺箱可根据需要左右摆动，适用特殊路况施工
- ◆ 摊铺厚度可以通过提升手柄在 3-15mm 范围内调节，并可根据路面施工需要调整合适的拱度
- ◆ 可配置车辙摊铺箱进行车辙修复施工

#### 5.11 Hydraulic system

- ◆ Imported Denmark Danfoss series pump, control valve group, USA Eaton, Denmark Danfoss motor have reliable performance.

- ◆ The load sensing pump and valve group are used to automatically adjust the flow of the pump according to load, reduce the output power of the engine, reduce the energy consumption and the heating of hydraulic oil.

#### 5.11 液压系统

- ◆ 采用进口丹麦丹佛斯串联泵、控制阀组，进口美国伊顿、丹麦丹佛斯马达，性能可靠
- ◆ 采用负载敏感泵、阀组，根据负载自动调节泵的流量，减少发动机输出功率，降低能耗，减少液压油发热

#### 5.12 Fiber shearing system (optional)

- ◆ Adopt hydraulic motor drive, adjustable rotate speed, adjust shearing displacement.
- ◆ The shear unit is controlled by the cylinder and four shear units are controlled independently.
- ◆ Adopt the independent integral tool holder, easy to replace.

#### 5.12 纤维剪切系统（选配）

- ◆ 采用液压马达驱动，转速可调，调节剪切量
- ◆ 采用气缸控制剪切单元，4个剪切单元独立控制
- ◆ 采用独立整体刀架，更换方便

### 6 Transport safety requirements

Requirements that users or organizations should ensure during transferring:

- ◆ Carefully check whether spare parts correspond to the packing list, and place the spare parts neatly and fixed.
- ◆ The spreader box is strictly prohibited to be hanging transported by the slurry sealer for long time, and should be consigned by the special vehicle; If the condition is not allowed, the spreader box can be hoisted inside the silo, but should be fixed on the frame with wire rope, so that it cannot move to damage the equipment.
- ◆ In the long distance transportation, the spread box traction chain shall be removed and lowered into the spare parts box so as to avoid falling off in transportation.
- ◆ The toolbox, the battery box, the left and right side doors are locked.
- ◆ The cover of the emulsion box, the cover of the water tank and the cover of the mixer shall be fixed firmly with the corresponding fixing device.

- ◆ As the whole vehicle is long, vehicle shall be driven slowly in particular at the corner;
- ◆ During long-distance transportation, should regularly check if the equipment lost contents etc.
- ◆ It is strictly forbidden to stand on rear control console during transportation
- ◆ Minimize driving at high speed and emergency braking.

## 6 运输安全要求


用户或使用单位在转场时应确保的要求：

- ◆ 新车出厂时，认真检查备件与装箱单是否相符，并将备件安放整齐、固定
- ◆ 摊铺箱严禁由稀浆封层车长时间悬挂运输，应由专用车辆托运；如条件不允许，可将摊铺箱吊放在骨料仓内部运输，但应将摊铺箱固定在摊铺箱架上用钢丝捆绑好，勿使其窜动，以免破坏设备
- ◆ 长距离运输时摊铺箱牵引链条拆下放入备件箱中，以免运输途中脱落
- ◆ 工具箱、电瓶箱、左右侧门关好锁死
- ◆ 乳液箱盖、水箱盖、搅拌器盖用相应的固定装置固定牢靠
- ◆ 因整机较长，在行驶途中特别是转弯处应慢速行驶
- ◆ 长途运输时，应注意经常检查设备有无物品丢失等
- ◆ 运输过程中后操作平台严禁上人
- ◆ 尽量减少高速行驶和紧急刹车

## 7. Construction Case

### 7 产品施工案例

#### ● Construction case 1

Date: 2018	Location: inner mongolia	Paving type: microsurfacing
		

#### ● Construction case 2

Date: 2018	Location: Zhejiang	Paving type: Sub-seal coat
------------	--------------------	----------------------------



## 8. Disclaimers

The Company follows the principles of sustainable development, and reserves the right to continuously improve our products without prior notice. We will perform continuous improvement of relevant contents without notice.

## 8 声明

本公司遵循可持续发展的原则，因此，我们保留在不预先通知的情况下，对产品进行持续改进的权力。相关内容的持续改进，恕不另行通知。