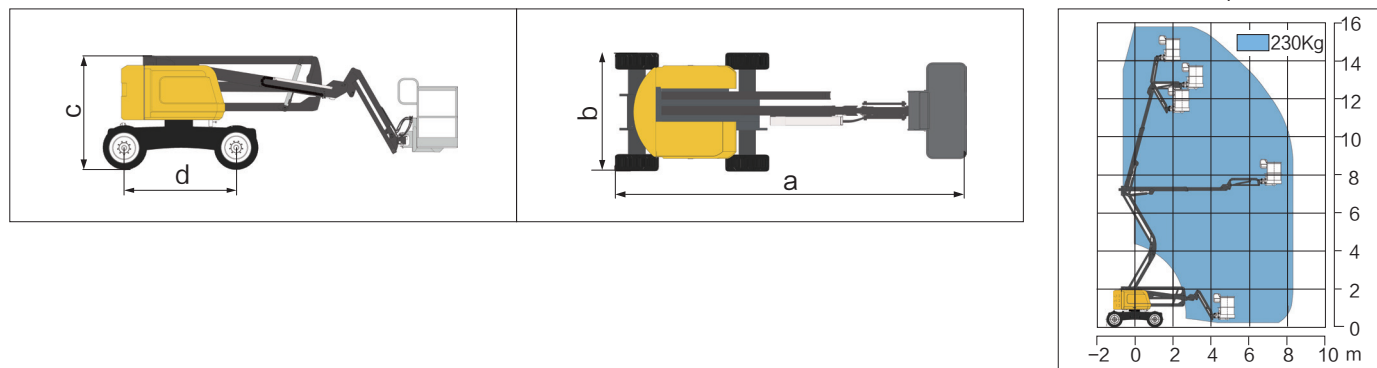




Parameter

Item	Unit	XGA16
Dimension		
Overall length (stowed size) a	mm	6690
Overall length (Transportation size)	mm	5150
Overall width b	mm	2260
Overall height c	mm	2130
Platform dimension	mm	1830 × 760 × 1150
Wheel base d	mm	2100
Maximum working height	mm	16050
Platform maximum height	mm	14050
Maximum working radius	mm	8220
Performance		
Maximum carrying mass	kg	230
Travel speed (stowed)	km/h	6.12
Travel speed (elevated/extended)	km/h	1
No. 1 boom luffing range	°	0~60
No. 2 boom luffing range	°	-9~75
Jib luffing range	°	-60~80
Turntable rotation angle	°	355
Tailswing	mm	0
Platform rotation angle	°	160
Minimum turning radius (outside)	mm	≤4500
Minimum turning radius (inside)	mm	≤2000
Total mass	kg	7100
Maximum slope rating (counterweight uphill)	%	45
Maximum slope rating (counterweight downhill)	%	25
Maximum side slope rating	%	25
Power source		
Engine model	/	Perkins 404D-22
Engine rated power	kw	38
Hydraulic tank capacity	L	64
Hydraulic system capacity	L	128
Fuel tank capacity	L	60
Standard configuration		1.83m × 0.76m working platform, two-entry platform with side revolving door, 12V DC auxiliary power, engine condition monitoring and starting protection device, four-wheel drive (standard), axle balance, emergency power unit, automatic platform leveling, 355° turntable rotation, telematics pre-interface, active defense protection system, hydraulic oil cooler, anti-environmental protection components, thumb rocker steering
Optional configuration		Half-high mesh platform, platform anti-squeezing auxiliary railway, mechanical anti-extrusion device, tool tray, work light, aircraft protection device and anti-falling assembly.

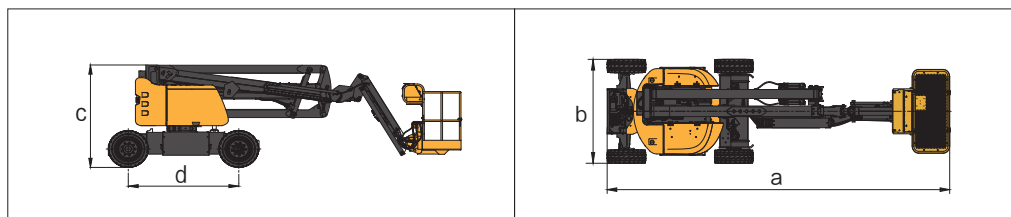
Work Curve Graph



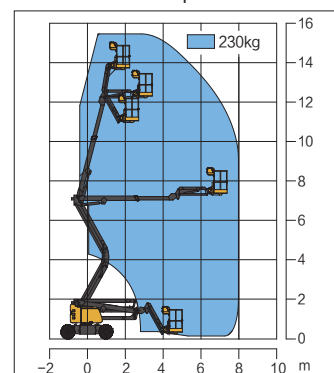


Parameter

Item	Unit	XGA16AC
Dimension		
Overall length (stowed size) a	mm	6600
Overall length (Transportation size)	mm	5170
Overall width b	mm	1750
Overall height c	mm	2000
Platform dimension	mm	1400 × 700 × 1150
Wheel base d	mm	2010
Maximum working height	mm	15800
Platform maximum height	mm	13800
Maximum working radius	mm	8200
Performance		
Maximum carrying mass	kg	227
Travel speed (stowed)	km/h	5.2
Travel speed (elevated/extended)	km/h	1
No. 1 boom luffing range	°	0~60
No. 2 boom luffing range	°	-8~75
Jib luffing range	°	-60~80
Turntable rotation angle	°	355
Tailswing	mm	0
Platform rotation angle	°	160
Minimum turning radius (outside)	mm	≤3300
Minimum turning radius (inside)	mm	≤1100
Total mass	kg	6900
Maximum slope rating (counterweight uphill)	%	30
Maximum slope rating (counterweight downhill)	%	20
Maximum side slope rating	%	25
Power source		
Engine model	AH/v	420 / 48 DC
Engine rated power	kw/v	4 / 48 DC
Hydraulic tank capacity	kw/v	2.2 / 24 DC
Hydraulic system capacity	kw/v	3.3 / 32 AC
Fuel tank capacity	/	Two-wheel drive
Standard configuration		1.4m × 0.7m Working platform, 12V DC auxiliary power, emergency power unit, automatic platform leveling, 355° turntable rotation, remote information processing reserved port, active defense protection system, anti-bad environment protection components, thumb rocker steering
Optional configuration		Half-height mesh platform, anti-squeeze hand auxiliary track, anti-squeeze device, tool tray, work light, parts, rise protection device, anti-fall component



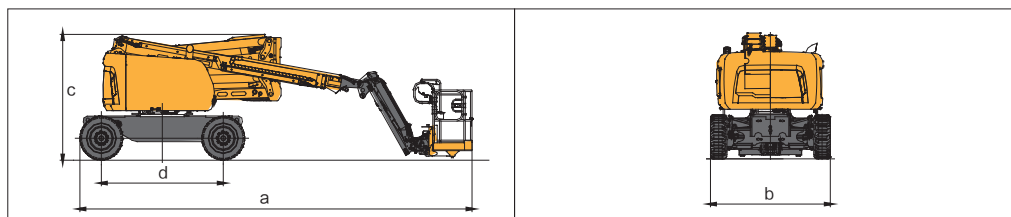
Work Curve Graph



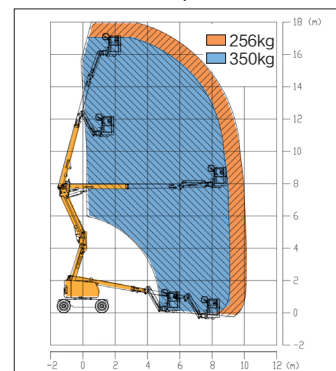


Parameter

Item	Unit	XGA18K
Dimension		
Overall length (stowed size) a	mm	7575
Overall length (Transportation size)	mm	5700
Overall width b	mm	2320
Overall height c	mm	2380
Platform dimension	mm	1830 × 760 × 1150
Wheel base d	mm	2360
Maximum working height	mm	18015
Platform maximum height	mm	16015
Maximum working radius	mm	10270
Performance		
Maximum carrying mass	kg	265 (Unrestricted) /350 (Restricted)
Travel speed (stowed)	km/h	5.5
Travel speed (elevated/extended)	km/h	1
No. 1 boom luffing range	°	0~65
No. 2 boom luffing range	°	-11~75
Jib luffing range	°	-60~70
Turntable rotation angle	°	360 continuous
Tailswing	mm	0
Platform rotation angle	°	160
Minimum turning radius (outside)	mm	≤4700
Minimum turning radius (inside)	mm	≤1900
Total mass	kg	8700
Maximum slope rating (counterweight uphill)	%	45
Maximum slope rating (counterweight downhill)	%	30
Maximum side slope rating	%	25
Power source		
Engine model	/	Yuchai YCF3050-T302/Kubota V2403-M-DI-ET04e
Engine rated power	kw	36.8 /36.5
Hydraulic tank capacity	L	85
Hydraulic system capacity	L	170
Fuel tank capacity	L	65
Standard configuration		1.83m × 0.76m working platform, two-entry platform with side revolving door, 12V DC auxiliary power, engine condition monitoring and starting protection device, four-wheel drive (standard), axle balance, emergency power unit, automatic platform leveling, 360° turntable rotation, telematics pre-interface, active defense protection system, hydraulic oil cooler, anti-environmental protection components, thumb rocker steering
Optional configuration		Half-high mesh platform, platform anti-squeezing auxiliary railway, mechanical anti-extrusion device, tool tray, work light, aircraft protection device and anti-falling assembly.



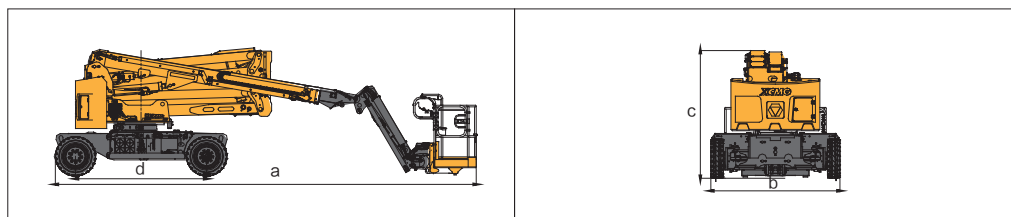
Work Curve Graph



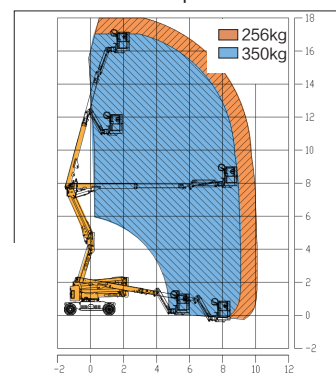


Parameter

Item	Unit	XGA18ACK	
Dimension			
Overall length (stowed size) a	mm	7575	
Overall length (Transportation size)	mm	7575	
Overall width b	mm	2320	
Overall height c	mm	2350	
Platform dimension	mm	1800 × 760 × 1150	
Wheel base d	mm	2360	
Maximum working height	mm	18000	
Platform maximum height	mm	16000	
Maximum working radius	mm	10100	
Performance			
Maximum carrying mass	kg	256 (Unrestricted) / 350 (Restricted)	
Travel speed (stowed)	km/h	4.8	
Travel speed (elevated/extended)	km/h	0.6	
No. 1 boom luffing range	°	0~65	
No. 2 boom luffing range	°	-11~75	
Jib luffing range	°	/	
Turntable rotation angle	°	355	
Tailswing	mm	0	
Platform rotation angle	°	160	
Minimum turning radius (outside)	mm	4.7	
Minimum turning radius (inside)	mm	/	
Total mass	kg	8600	
Maximum slope rating (counterweight uphill)	%	30	
Maximum slope rating (counterweight downhill)	%	25	
Maximum side slope rating	%	25	
Power source			
Engine model	/	420 / 48 DC(Standard)	420 / 48 Lithium batteries(Optional)
Engine rated power	kw	12 / 32 AC	12 / 32 AC
Hydraulic tank capacity	L	2.3 / 12 DC	2.3 / 12 DC
Hydraulic system capacity	L	3.3 / 32 AC	3.3 / 32 AC
Fuel tank capacity	L	/	/
Standard configuration		1.8m × 0.7m Working platform, 12V DC auxiliary power, emergency power unit, automatic platform levelling, 355° turntable rotation,remote information processing reserved port, active defense protection system, anti-bad environment protection components, thumb rocker steering	
Optional configuration		Half-height mesh platform, anti-squeeze hand auxiliary track, anti-squeeze device, tool tray, parts, rise protection device, anti-fall component	



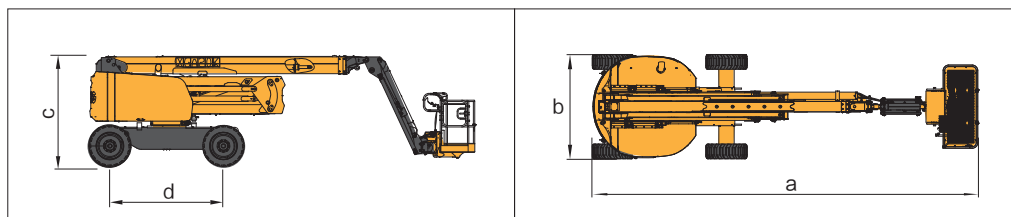
Work Curve Graph



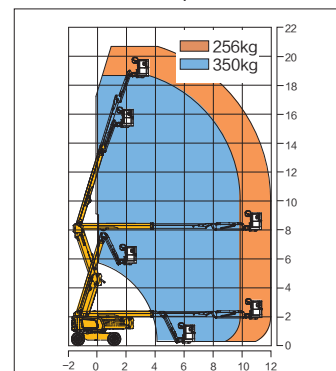


Parameter

Item	Unit	XGA20K
Dimension		
Overall length (stowed size) a	mm	8520
Overall length (Transportation size)	mm	6260
Overall width b	mm	2300
Overall height c	mm	2400
Platform dimension	mm	1830 × 760 × 1150
Wheel base d	mm	2500
Maximum working height	mm	20630
Platform maximum height	mm	18630
Maximum working radius	mm	12080
Performance		
Maximum carrying mass	kg	256 (Unrestricted) / 350 (Restricted)
Travel speed (stowed)	km/h	5.5
Travel speed (elevated/extended)	km/h	1
No. 1 boom luffing range	°	0 ~ 72
No. 2 boom luffing range	°	0 ~ 73
Jib luffing range	°	/
Turntable rotation angle	°	360 continuous
Tailswing	mm	540
Platform rotation angle	°	160
Minimum turning radius (outside)	mm	5000
Minimum turning radius (inside)	mm	2300
Total mass	kg	9900
Maximum slope rating (counterweight uphill)	%	30
Maximum slope rating (counterweight downhill)	%	45
Maximum side slope rating	%	25
Power source		
Engine model	/	Yuchai YCF3050-T302
Engine rated power	kw	36.8
Hydraulic tank capacity	L	120
Hydraulic system capacity	L	240
Fuel tank capacity	L	90
Standard configuration		1.83m × 0.76m working platform, two-entry platform with side revolving door, 12V DC auxiliary power, engine condition monitoring and starting protection device, four-wheel drive (standard), axle balance, emergency power unit, automatic platform leveling, 360° turntable rotation, telematics pre-inter-face, active defense protection system, hydraulic oil cooler, anti-environmental protection components, thumb rocker steering
Optional configuration		Half-high mesh platform, platform anti-squeezing auxiliary railway, mechanical anti-extrusion device, tool tray, work light, aircraft protection device and anti-falling assembly.



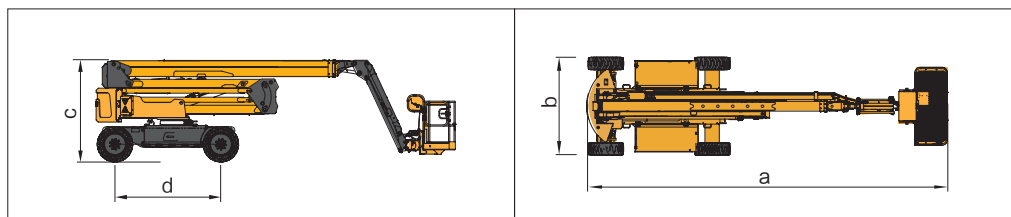
Work Curve Graph



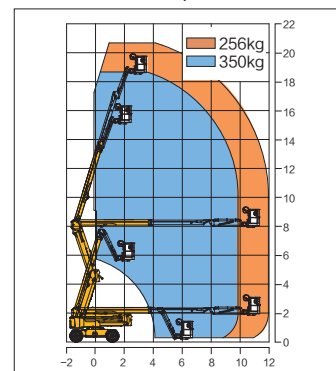


Parameter

Item	Unit	XGA20AC	
Dimension			
Overall length (stowed size) a	mm	8490	
Overall length (Transportation size)	mm	8490	
Overall width b	mm	2490	
Overall height c	mm	2380	
Platform dimension	mm	1800 × 760 × 1150	
Wheel base d	mm	2500	
Maximum working height	mm	20600	
Platform maximum height	mm	18600	
Maximum working radius	mm	11980	
Performance			
Maximum carrying mass	kg	256 (Unrestricted) / 350 (Restricted)	
Travel speed (stowed)	km/h	4.8	
Travel speed (elevated/extended)	km/h	0.6	
No. 1 boom luffing range	°	0~72	
No. 2 boom luffing range	°	0~73	
Jib luffing range	°	/	
Turntable rotation angle	°	360 continuous	
Tailswing	mm	560	
Platform rotation angle	°	160	
Minimum turning radius (outside)	mm	5000	
Minimum turning radius (inside)	mm	/	
Total mass	kg	9100	
Maximum slope rating (counterweight uphill)	%	30	
Maximum slope rating (counterweight downhill)	%	45	
Maximum side slope rating	%	25	
Power source			
Engine model	AH/v	420 / 48 DC(Standard)	420 / 48 Lithium batteries(Optional)
Engine rated power	kw/v	12 / 32 AC	12 / 32 AC
Hydraulic tank capacity	kw/v	2.3 / 12 DC	2.3 / 12 DC
Hydraulic system capacity	kw/v	3.3 / 32 AC	3.3 / 32 AC
Fuel tank capacity	/	/	/
Standard configuration		1.83m × 0.76m work platform, Two-entry platform with side revolving door , 12 V DC auxiliary power,, 4-wheel drive (standard), axle balance, emergency power unit,, platform automatic leveling, 360° turntable rotation, remote information processing reserved port, active defense protection syanti-bad environment protection components, thumb rocker steering.	
Optional configuration		Half-high mesh platform, platform anti-squeezing auxiliary railway, mechanical anti-extrusion device, tool tray, work light, aircraft protection device and anti-falling assembly.	



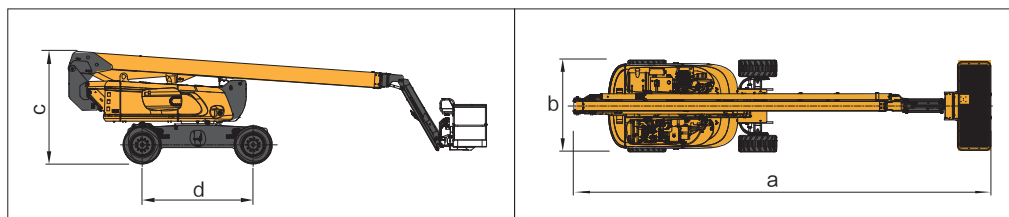
Work Curve Graph





Parameter

Item	Unit	XGA26
Dimension		
Overall length (stowed size) a	mm	11280
Overall length (Transportation size)	mm	9400
Overall width b	mm	2490
Overall height c	mm	3000
Platform dimension	mm	2440 × 900 × 1150
Wheel base d	mm	3000
Maximum working height	mm	26380
Platform maximum height	mm	24380
Maximum working radius	mm	18900
Performance		
Maximum carrying mass	kg	230
Travel speed (stowed)	km/h	5
Travel speed (elevated/extended)	km/h	1
No. 1 boom luffing range	°	-1~ 70
No. 2 boom luffing range	°	-35~ 68
Jib luffing range	°	-60~ 68
Turntable rotation angle	°	360 continuous
Tailswing	mm	1330(Lift)
Platform rotation angle	°	180
Minimum turning radius (outside)	mm	6700(Two turns) / 4200(Four turns)
Minimum turning radius (inside)	mm	3920(Two turns) / 2400(Four turns)
Total mass	kg	17800
Maximum slope rating (counterweight uphill)	%	/
Maximum slope rating (counterweight downhill)	%	45
Maximum side slope rating	%	25
Power source		
Engine model	/	Cummins QSF2.8 71BHP
Engine rated power	kw	53
Hydraulic tank capacity	L	150
Hydraulic system capacity	L	300
Fuel tank capacity	L	180
Standard configuration		1.83m × 0.76m working platform, two-entry platform with side revolving door, 12V DC auxiliary power, engine condition monitoring and starting protection device, four-wheel drive (standard), axle balance, emergency power unit, automatic platform leveling, 360° turntable rotation, telematics pre-inter-face, active defense protection system, hydraulic oil cooler, anti-environmental protection components, thumb rocker steering
Optional configuration		Half-high mesh platform, platform anti-squeezing auxiliary railway, mechanical anti-extrusion device, tool tray, work light, aircraft protection device and anti-falling assembly.



Work Curve Graph

