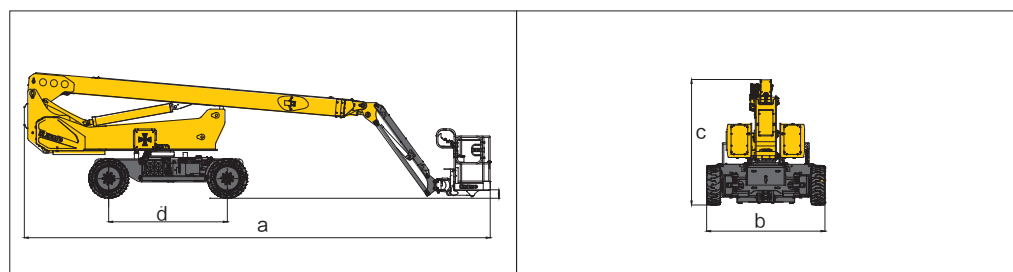


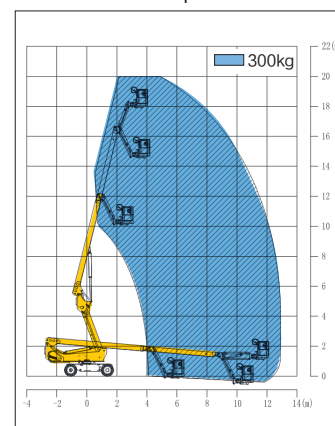


Parameter

Item	Unit	XGS20AC	
Dimension			
Overall length (stowed size) a	mm	9800	
Overall length (Transportation size)	mm	9800	
Overall width b	mm	2490	
Overall height c	mm	2640	
Platform dimension	mm	1830 × 760 × 1150	
Wheel base d	mm	2500	
Maximum working height	mm	20500	
Maximum height of platform	mm	18500	
Maximum working radius	mm	13200	
Performance			
Maximum carrying mass	kg	300	
Travel speed (stowed)	km/h	4.8	
Travel speed (elevated/extended)	km/h	0.6	
Boom luffing range	°	-5~76	
Turntable rotation angle	°	360 Continuous	
Tailswing	mm	1630	
Platform rotation angle	°	160	
Minimum turning radius (outside)	mm	5	
Minimum turning radius (inside)	mm	/	
Total mass	kg	8600 (Lead-acid batterie) / 8350 (Lithium batteries)	
Maximum slope rating (counterweight uphill)	%	45	
Maximum slope rating (counterweight downhill)	%	30	
Maximum side slope rating	%	25	
Power source			
Battery	AH/v	420 / 48DC (Standard)	420 / 48 (Lithium batteries)
Power unit	kw/v	12 / 32AC	12 / 32AC
Auxiliary power unit	kw/v	2.3 / 12DC	2.3 / 12DC
Travel motor	kw/v	3.3 / 32AC	3.3 / 32AC
Drive	/	/	/
Standard configuration		1.83m × 0.76m work platform, 12 V DC auxiliary power , emergency power unit , platform automatic leveling, 360° turntable rotation,remote information processing reserved port, active defense protection syanti-bad environment protection components, thumb rocker steering .	
Optional configuration		Half-height mesh platform, anti-squeeze hand auxiliary track, anti-squeeze device, tool tray, parts, rise protection device, anti-fall component , work light	



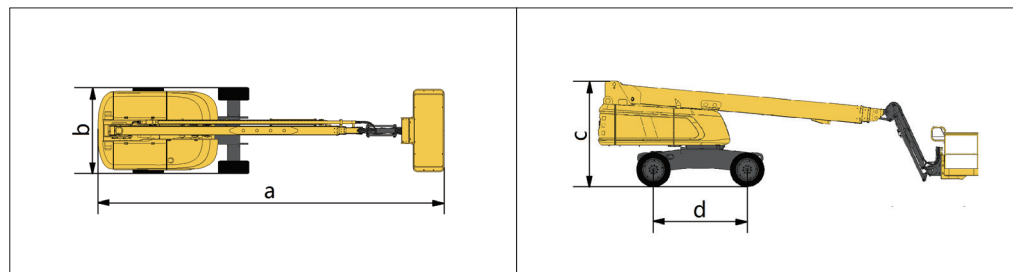
Work Curve Graph



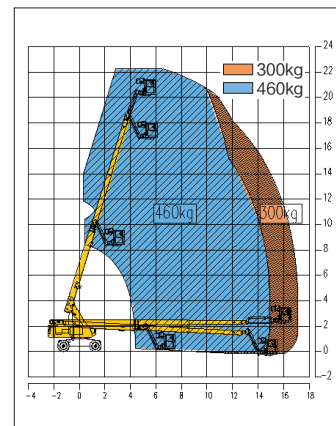


Parameter

Item	Unit	XGS22
Dimension		
Overall length (stowed size) a	mm	10040
Overall length (Transportation size)	mm	9850
Overall width b	mm	2490
Overall height c	mm	2460
Platform dimension	mm	2440 × 900 × 1150
Wheel base d	mm	2500
Maximum working height	mm	22000
Maximum height of platform	mm	20000
Maximum working radius	mm	17200
Performance		
Maximum carrying mass	kg	300 (Unrestricted) / 460 (Restricted)
Travel speed (stowed)	km/h	6.3
Travel speed (elevated/extended)	km/h	1.1
Boom luffing range	°	-3~ 73
Turntable rotation angle	°	c
Tailswing	mm	1270
Platform rotation angle	°	160
Minimum turning radius (outside)	mm	6000
Minimum turning radius (inside)	mm	3280
Total mass	kg	12300
Maximum slope rating (counterweight uphill)	%	45
Maximum slope rating (counterweight downhill)	%	30
Maximum side slope rating	%	25
Power source		
Engine model	/	Yuchai YCF3050-T302 / Kubota V2403-M-DI-E3B
Engine rated power	kw	36.8 / 36
Hydraulic tank capacity	L	120
Hydraulic system capacity	L	240
Fuel tank capacity	L	150
Standard configuration		2.4m × 0.9m working platform, three-entry platform with side revolving door, 12V DC auxiliary power, engine condition monitoring and starting protection device, four-wheel drive (standard), axle balance, emergency power unit, axle balance pressure Detection system, automatic platform leveling, 360° turntable rotation, telematics pre-interface, active defense protection system, hydraulic oil cooler, anti-environmental protection components, thumb rocker steering
Optional configuration		Half-height mesh platform, anti-squeeze hand auxiliary track, anti-squeeze device, tool tray, parts, rise protection device, anti-fall component



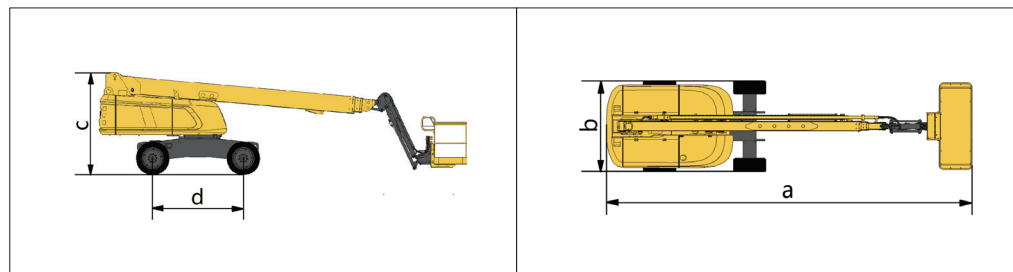
Work Curve Graph



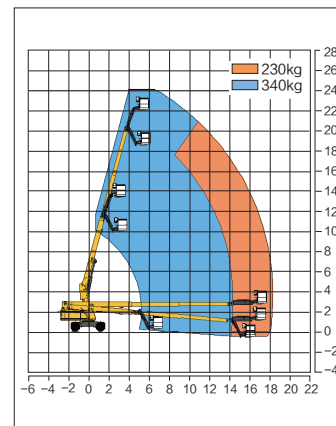


Parameter

Item	Unit	XGS24
Dimension		
Overall length (stowed size) a	mm	10150
Overall length (Transportation size)	mm	8150
Overall width b	mm	2490
Overall height c	mm	2800
Platform dimension	mm	2400 × 900 × 1150
Wheel base d	mm	2500
Maximum working height	mm	24000
Maximum height of platform	mm	22000
Maximum working radius	mm	18300
Performance		
Maximum carrying mass	kg	230 (Unrestricted) / 340 (Restricted)
Travel speed (stowed)	km/h	6
Travel speed (elevated/extended)	km/h	1
Boom luffing range	°	-5~ 75
Turntable rotation angle	°	360 Continuous
Tailswing	mm	1550
Platform rotation angle	°	160
Minimum turning radius (outside)	mm	6000
Minimum turning radius (inside)	mm	3300
Total mass	kg	12500
Maximum slope rating (counterweight uphill)	%	45
Maximum slope rating (counterweight downhill)	%	30
Maximum side slope rating	%	25
Power source		
Engine model	/	Yuchai YCF3065-T302
Engine rated power	kw	48
Hydraulic tank capacity	L	210
Hydraulic system capacity	L	420
Fuel tank capacity	L	170
Standard configuration		2.4m × 0.9m working platform, three-entry platform with side revolving door, 12V DC auxiliary power, engine condition monitoring and starting protection device, four-wheel drive (standard), axle balance, emergency power unit, axle balance pressure Detection system, automatic platform leveling, 360° turntable rotation, telematics pre-interface, active defense protection system, hydraulic oil cooler, anti-environmental protection components, thumb rocker steering
Optional configuration		Half-height mesh platform, anti-squeeze hand auxiliary track, anti-squeeze device, tool tray, parts, rise protection device, anti-fall component



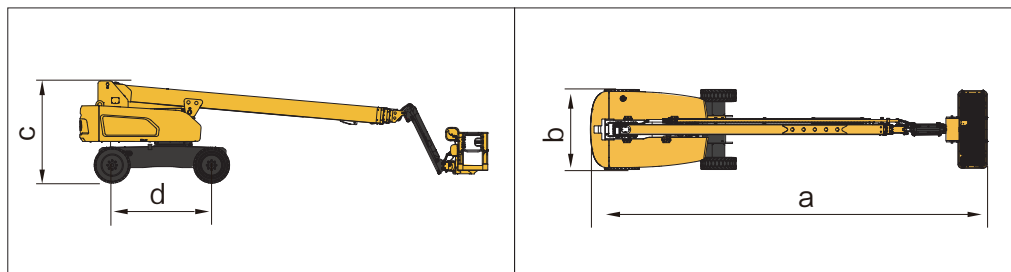
Work Curve Graph



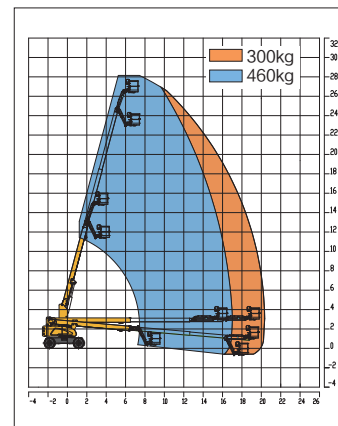


Parameter

Item	Unit	XGS28K
Dimension		
Overall length (stowed size) a	mm	12300
Overall length (Transportation size)	mm	/
Overall width b	mm	2490
Overall height c	mm	3050
Platform dimension	mm	2400 × 900 × 1150
Wheel base d	mm	3000
Maximum working height	mm	28200
Maximum height of platform	mm	26200
Maximum working radius	mm	23000
Performance		
Maximum carrying mass	kg	300 (Unrestricted) / 460 (Restricted)
Travel speed (stowed)	km/h	6.1
Travel speed (elevated/extended)	km/h	1
Boom luffing range	°	-5~75
Turntable rotation angle	°	360 Continuous
Tailswing	mm	1600
Platform rotation angle	°	160
Minimum turning radius (outside)	mm	6700
Minimum turning radius (inside)	mm	3600
Total mass	kg	18300
Maximum slope rating (counterweight uphill)	%	40
Maximum slope rating (counterweight downhill)	%	30
Maximum side slope rating	%	25
Power source		
Engine model	/	Yuchai YCF3065-T302 / Yuchai YCF3065-T482 / Cummins QSF2.8t3TC71
Engine rated power	kw	48 / 48 / 53
Hydraulic tank capacity	L	210
Hydraulic system capacity	L	350
Fuel tank capacity	L	180
Standard configuration		2.4m × 0.9m working platform, three-entry platform with side revolving door, 12V DC auxiliary power, engine condition monitoring and starting protection device, four-wheel drive (standard), axle balance, emergency power unit, axle balance pressure Detection system, automatic platform leveling, 360° turntable rotation, telematics pre-interface, active defense protection system, hydraulic oil cooler, anti-environmental protection components, thumb rocker steering
Optional configuration		Half-height mesh platform, anti-squeeze hand auxiliary track, anti-squeeze device, tool tray, parts, rise protection device, anti-fall component



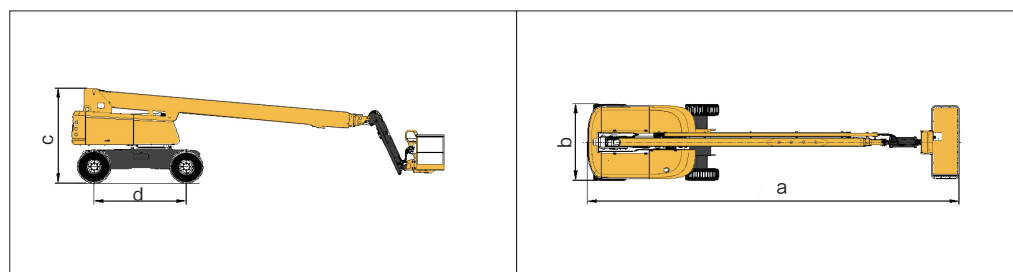
Work Curve Graph



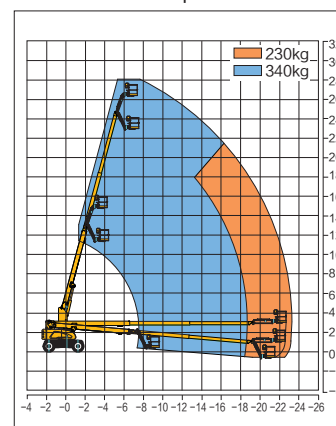


Parameter

Item	Unit	XGS
Dimension		
Overall length (stowed size) a	mm	12100
Overall length (Transportation size)	mm	/
Overall width b	mm	2490
Overall height c	mm	3050
Platform dimension	mm	2400 × 900 × 1150
Wheel base d	mm	3000
Maximum working height	mm	28200
Maximum height of platform	mm	26200
Maximum working radius	mm	23200
Performance		
Maximum carrying mass	kg	230 (Unrestricted) / 340 (Restricted)
Travel speed (stowed)	km/h	6.1
Travel speed (elevated/extended)	km/h	1
Boom luffing range	°	-5~75
Turntable rotation angle	°	360 Continuous
Tailswing	mm	1500
Platform rotation angle	°	160
Minimum turning radius (outside)	mm	6700
Minimum turning radius (inside)	mm	3600
Total mass	kg	16600
Maximum slope rating (counterweight uphill)	%	40
Maximum slope rating (counterweight downhill)	%	30
Maximum side slope rating	%	25
Power source		
Engine model	/	Yuchai YCF3065-T302 / Cummins QSF2.8t3TC71
Engine rated power	kw	48 / 53
Hydraulic tank capacity	L	210
Hydraulic system capacity	L	350
Fuel tank capacity	L	180
Standard configuration		2.4m × 0.9m working platform, three-entry platform with side revolving door, 12V DC auxiliary power, engine condition monitoring and starting protection device, four-wheel drive (standard), axle balance, emergency power unit, axle balance pressure Detection system, automatic platform leveling, 360° turntable rotation, telematics pre-interface, active defense protection system, hydraulic oil cooler, anti-environmental protection components, thumb rocker steering
Optional configuration		Half-height mesh platform, anti-squeeze hand auxiliary track, anti-squeeze device, tool tray, parts, rise protection device, anti-fall component



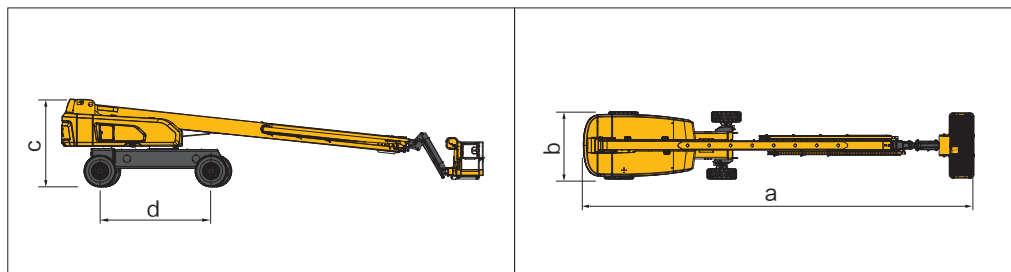
Work Curve Graph



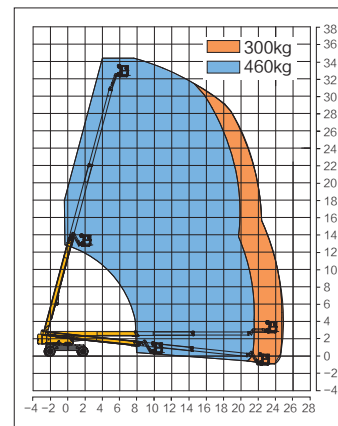


Parameter

Item	Unit	XGS34K
Dimension		
Overall length (stowed size) a	mm	14400
Overall length (Transportation size)	mm	14400
Overall width b	mm	2490 (Shaft retracted) / 3800 (Shaft extension)
Overall height c	mm	3000
Platform dimension	mm	2400 × 900 × 1150
Wheel base d	mm	3800
Maximum working height	mm	34300
Maximum height of platform	mm	32300
Maximum working radius	mm	24700
Performance		
Maximum carrying mass	kg	300 (Unrestricted) / 460 (Restricted)
Travel speed (stowed)	km/h	5
Travel speed (elevated/extended)	km/h	1
Boom luffing range	°	-6~ 75
Turntable rotation angle	°	360 Continuous
Tailswing	mm	2085 (Shaft retracted) / 1430 (Shaft extension)
Platform rotation angle	°	160
Minimum turning radius (outside)	mm	6800 (Closing) / 5800 (Extending)
Minimum turning radius (inside)	mm	4400 (Closing) / 2400 (Extending)
Total mass	kg	19300
Maximum slope rating (counterweight uphill)	%	45
Maximum slope rating (counterweight downhill)	%	45
Maximum side slope rating	%	25
Power source		
Engine model	/	Yuchai YC4FA75-T300
Engine rated power	kw	55
Hydraulic tank capacity	L	260
Hydraulic system capacity	L	520
Fuel tank capacity	L	200
Standard configuration		2.4m × 0.9m working platform, three-entry platform with side revolving door, 12V DC auxiliary power, engine condition monitoring and starting protection device, four-wheel drive (standard), axle balance, emergency power unit, axle balance pressure Detection system, automatic platform leveling, 360° turntable rotation, telematics pre-interface, active defense protection system, hydraulic oil cooler, anti-environmental protection components, thumb rocker steering
Optional configuration		Half-height mesh platform, anti-squeeze hand auxiliary track, anti-squeeze device, tool tray, parts, rise protection device, anti-fall component



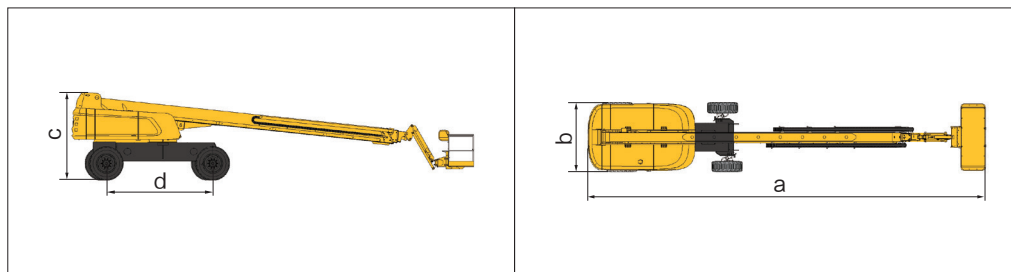
Work Curve Graph



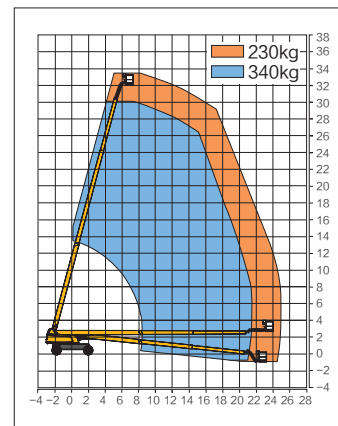


Parameter

Item	Unit	
Dimension		
Overall length (stowed size) a	mm	14300
Overall length (Transportation size)	mm	14300
Overall width b	mm	2490 (Shaft retracted) / 3800 (Shaft extension)
Overall height c	mm	3070
Platform dimension	mm	2400 × 900 × 1150
Wheel base d	mm	3800
Maximum working height	mm	34200
Maximum height of platform	mm	32200
Maximum working radius	mm	24600
Performance		
Maximum carrying mass	kg	230 (Unrestricted) / 340 (Restricted)
Travel speed (stowed)	km/h	5
Travel speed (elevated/extended)	km/h	1
Boom luffing range	°	-6~75
Turntable rotation angle	°	360 Continuous
Tailswing	mm	2085 (Shaft retracted) / 1430 (Shaft extension)
Platform rotation angle	°	160
Minimum turning radius (outside)	mm	6800 (Closing) / 5800 (Extending)
Minimum turning radius (inside)	mm	4400 (Closing) / 2400 (Extending)
Total mass	kg	18400
Maximum slope rating (counterweight uphill)	%	45
Maximum slope rating (counterweight downhill)	%	45
Maximum side slope rating	%	25
Power source		
Engine model	/	Yuchai YC4FA75-T300
Engine rated power	kw	55
Hydraulic tank capacity	L	260
Hydraulic system capacity	L	520
Fuel tank capacity	L	200
Standard configuration		2.4m × 0.9m working platform, three-entry platform with side revolving door, 12V DC auxiliary power, engine condition monitoring and starting protection device, four-wheel drive (standard), axle balance, emergency power unit, axle balance pressure Detection system, automatic platform leveling, 360° turntable rotation, telematics pre-interface, active defense protection system, hydraulic oil cooler, anti-environmental protection components, thumb rocker steering
Optional configuration		Half-height mesh platform, anti-squeeze hand auxiliary track, anti-squeeze device, tool tray, parts, rise protection device, anti-fall component



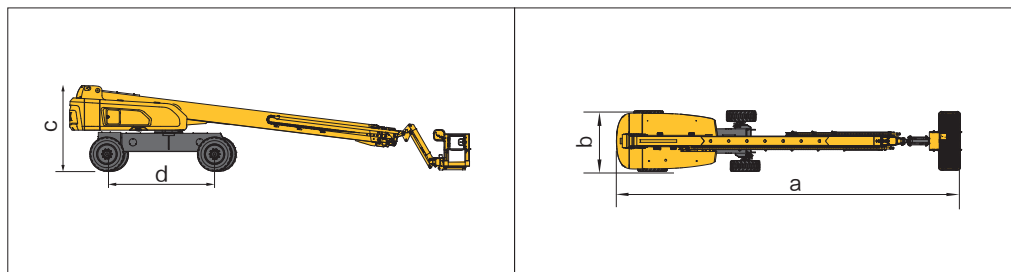
Work Curve Graph



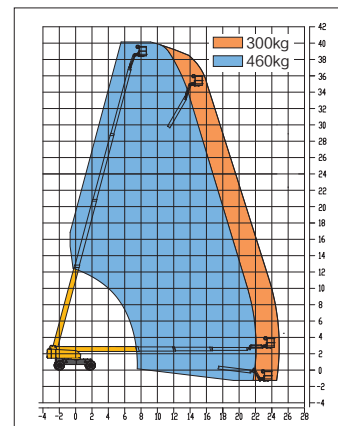


Parameter

Item	Unit	XGS40K
Dimension		
Overall length (stowed size) a	mm	14060
Overall length (Transportation size)	mm	12500
Overall width b	mm	2490 (Shaft retracted)/ 3800 (Shaft extension)
Overall height c	mm	3000
Platform dimension	mm	2400 × 900 × 1150
Wheel base d	mm	3800
Maximum working height	mm	40200
Maximum height of platform	mm	38200
Maximum working radius	mm	24900
Performance		
Maximum carrying mass	kg	300 (Unrestricted) / 460 (Restricted)
Travel speed (stowed)	km/h	5
Travel speed (elevated/extended)	km/h	1
Boom luffing range	°	-6.5~75
Turntable rotation angle	°	360 Continuous
Tailswing	mm	2355 (Shaft retracted)/ 1700 (Shaft extension)
Platform rotation angle	°	160
Minimum turning radius (outside)	mm	6800 (Closing) / 5800 (Extending)
Minimum turning radius (inside)	mm	4400 (Closing) / 2400 (Extending)
Total mass	kg	21460
Maximum slope rating (counterweight uphill)	%	40
Maximum slope rating (counterweight downhill)	%	30
Maximum side slope rating	%	25
Power source		
Engine model	/	Yuchai YC4FA75-T300 / Cummins QSF2.8t3TC71
Engine rated power	kw	55 / 53
Hydraulic tank capacity	L	260
Hydraulic system capacity	L	400
Fuel tank capacity	L	180
Standard configuration		2.4m × 0.9m working platform, three-entry platform with side revolving door, 12V DC auxiliary power, engine condition monitoring and starting protection device, four-wheel drive (standard), axle balance, emergency power unit, axle balance pressure Detection system, automatic platform leveling, 360° turntable rotation, telematics pre-interface, active defense protection system, hydraulic oil cooler, anti-environmental protection components, thumb rocker steering
Optional configuration		Half-height mesh platform, anti-squeeze hand auxiliary track, anti-squeeze device, tool tray, parts, rise protection device, anti-fall component



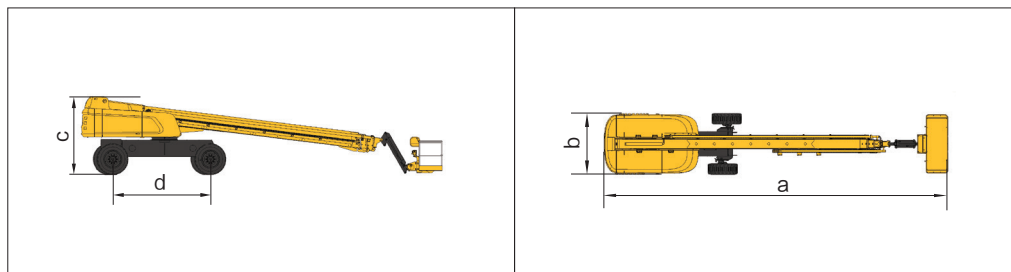
Work Curve Graph



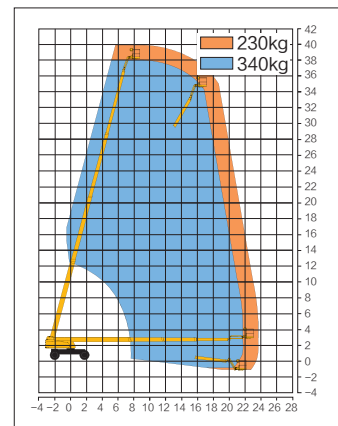


Parameter

Item	Unit	XGS40
Dimension		
Overall length (stowed size) a	mm	14060
Overall length (Transportation size)	mm	12500
Overall width b	mm	2490 (Shaft retracted) / 3800 (Shaft extension)
Overall height c	mm	3000
Platform dimension	mm	2400 × 900 × 1150
Wheel base d	mm	3800
Maximum working height	mm	40200
Maximum height of platform	mm	38200
Maximum working radius	mm	23900
Performance		
Maximum carrying mass	kg	230 (Unrestricted) / 340 (Restricted)
Travel speed (stowed)	km/h	5
Travel speed (elevated/extended)	km/h	1
Boom luffing range	°	-7~75
Turntable rotation angle	°	360 Continuous
Tailswing	mm	2355 (Shaft retracted) / 1700 (Shaft extension)
Platform rotation angle	°	160
Minimum turning radius (outside)	mm	6800 (Closing) / 5800 (Extending)
Minimum turning radius (inside)	mm	4400 (Closing) / 2400 (Extending)
Total mass	kg	20600
Maximum slope rating (counterweight uphill)	%	40
Maximum slope rating (counterweight downhill)	%	30
Maximum side slope rating	%	25
Power source		
Engine model	/	Yuchai YC4FA75-T300
Engine rated power	kw	55
Hydraulic tank capacity	L	260
Hydraulic system capacity	L	400
Fuel tank capacity	L	180
Standard configuration		2.4m × 0.9m working platform, three-entry platform with side revolving door, 12V DC auxiliary power, engine condition monitoring and starting protection device, four-wheel drive (standard), axle balance, emergency power unit, axle balance pressure Detection system, automatic platform leveling, 360° turntable rotation, telematics pre-interface, active defense protection system, hydraulic oil cooler, anti-environmental protection components, thumb rocker steering
Optional configuration		Half-height mesh platform, anti-squeeze hand auxiliary track, anti-squeeze device, tool tray, parts, rise protection device, anti-fall component



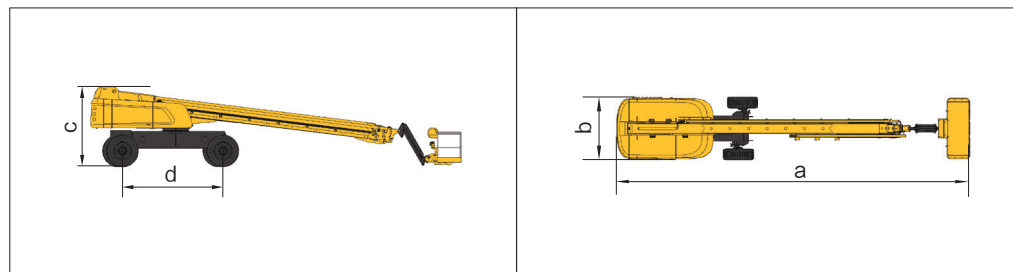
Work Curve Graph



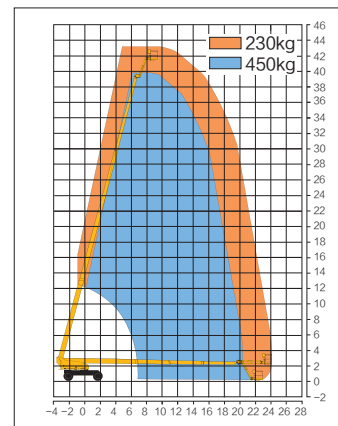


Parameter

Item	Unit	XGS43
Dimension		
Overall length (stowed size) a	mm	14900
Overall length (Transportation size)	mm	12000
Overall width b	mm	2490 (Shaft retracted) / 3800 (Shaft extension)
Overall height c	mm	3050
Platform dimension	mm	2400 × 900 × 1150
Wheel base d	mm	3800
Maximum working height	mm	43300
Maximum height of platform	mm	41300
Maximum working radius	mm	25000
Performance		
Maximum carrying mass	kg	230 (Unrestricted) / 450 (Restricted)
Travel speed (stowed)	km/h	5
Travel speed (elevated/extended)	km/h	1
Boom luffing range	°	-1~ 75
Turntable rotation angle	°	360 Continuous
Tailswing	mm	2390 (Shaft retracted) / 1725 (Shaft extension)
Platform rotation angle	°	160
Minimum turning radius (outside)	mm	6800 (Closing) / 5800 (Extending)
Minimum turning radius (inside)	mm	4400 (Closing) / 2400 (Extending)
Total mass	kg	22000
Maximum slope rating (counterweight uphill)	%	40
Maximum slope rating (counterweight downhill)	%	30
Maximum side slope rating	%	25
Power source		
Engine model	/	Yuchai YC4FA75-T300
Engine rated power	kw	55
Hydraulic tank capacity	L	260
Hydraulic system capacity	L	400
Fuel tank capacity	L	180
Standard configuration		2.4m × 0.9m working platform, three-entry platform with side revolving door, 12V DC auxiliary power, engine condition monitoring and starting protection device, four-wheel drive (standard), axle balance, emergency power unit, axle balance pressure Detection system, automatic platform leveling, 360° turntable rotation, telematics pre-interface, active defense protection system, hydraulic oil cooler, anti-environmental protection components, thumb rocker steering
Optional configuration		Half-height mesh platform, anti-squeeze hand auxiliary track, anti-squeeze device, tool tray, parts, rise protection device, anti-fall component



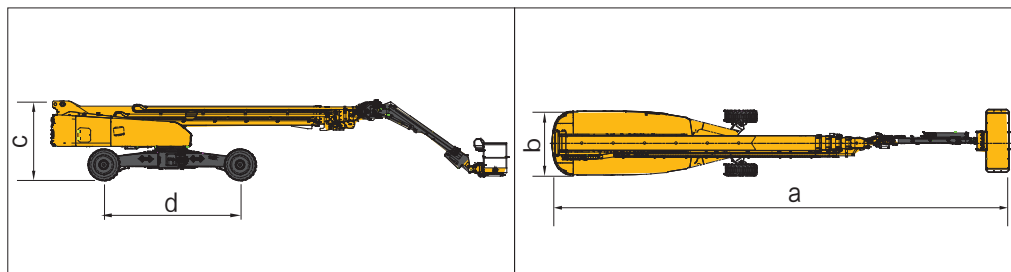
Work Curve Graph



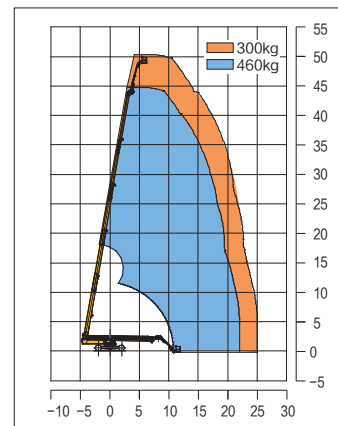


Parameter

Item	Unit	XGS50K
Dimension		
Overall length (stowed size) a	mm	17460
Overall length (Transportation size)	mm	12550
Overall width b	mm	2490 (Shaft retracted) / 5030 (Shaft extension)
Overall height c	mm	3000
Platform dimension	mm	2400 × 900 × 1150
Wheel base d	mm	5220 (Shaft retracted) / 4590 (Shaft extension)
Maximum working height	mm	50000
Maximum height of platform	mm	48000
Maximum working radius	mm	24700
Performance		
Maximum carrying mass	kg	300 (Unrestricted) / 460 (Restricted)
Travel speed (stowed)	km/h	4.5
Travel speed (elevated/extended)	km/h	0.3~0.5
Boom luffing range	°	0~80 /-45~ 75
Turntable rotation angle	°	360 Continuous
Tailswing	mm	2000
Platform rotation angle	°	160
Minimum turning radius (outside)	mm	9500 (Closing) / 6600 (Extending)
Minimum turning radius (inside)	mm	7600 (Closing) / 2800 (Extending)
Total mass	kg	24440
Maximum slope rating (counterweight uphill)	%	45
Maximum slope rating (counterweight downhill)	%	30
Maximum side slope rating	%	25
Power source		
Engine model	/	Yuchai YC4FA85-T300
Engine rated power	kw	62.5
Hydraulic tank capacity	L	250
Hydraulic system capacity	L	420
Fuel tank capacity	L	200
Standard configuration		2.4m × 0.9m working platform, three-entry platform with side revolving door, 12V DC auxiliary power, engine condition monitoring and starting protection device, four-wheel drive (standard), axle balance, emergency power unit, axle balance pressure Detection system, automatic platform leveling, 360° turntable rotation, telematics pre-interface, active defense protection system, hydraulic oil cooler, anti-environmental protection components, thumb rocker steering
Optional configuration		Half-height mesh platform, anti-squeeze hand auxiliary track, anti-squeeze device, tool tray, parts, rise protection device, anti-fall component



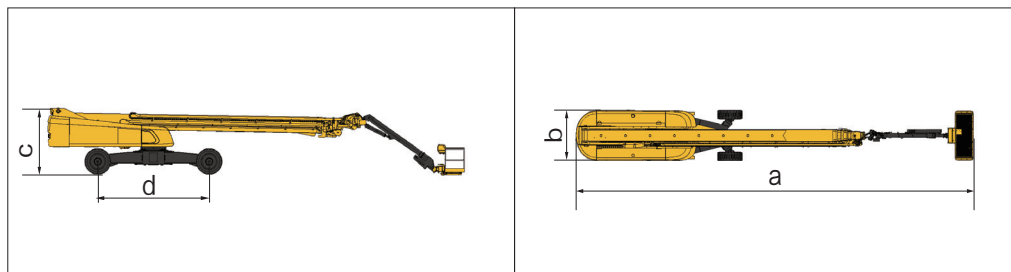
Work Curve Graph





Parameter

Item	Unit	XGS58
Dimension		
Overall length (stowed size) a	mm	19450
Overall length (Transportation size)	mm	14600
Overall width b	mm	2490 (Shaft retracted) / 5030 (Shaft extension)
Overall height c	mm	3070
Platform dimension	mm	2400 × 900 × 1150
Wheel base d	mm	5220 (Shaft retracted) / 4590 (Shaft extension)
Maximum working height	mm	58600
Maximum height of platform	mm	56600
Maximum working radius	mm	24400
Performance		
Maximum carrying mass	kg	230 (Unrestricted) / 450 (Restricted)
Travel speed (stowed)	km/h	4.5
Travel speed (elevated/extended)	km/h	0.3~0.5
Boom luffing range	°	-1~80 / -45~ 75
Turntable rotation angle	°	360 Continuous
Tailswing	mm	2320
Platform rotation angle	°	160
Minimum turning radius (outside)	mm	9500 (Closing) / 6600 (Extending)
Minimum turning radius (inside)	mm	7600 (Closing) / 2800 (Extending)
Total mass	kg	27900
Maximum slope rating (counterweight uphill)	%	45
Maximum slope rating (counterweight downhill)	%	30
Maximum side slope rating	%	25
Power source		
Engine model	/	Duetz TD 3.6 L4
Engine rated power	kw	74.4
Hydraulic tank capacity	L	250
Hydraulic system capacity	L	430
Fuel tank capacity	L	200
Standard configuration		2.4m × 0.9m working platform, three-entry platform with side revolving door, 12V DC auxiliary power, engine condition monitoring and starting protection device, four-wheel drive (standard), axle balance, emergency power unit, axle balance pressure Detection system, automatic platform leveling, 360° turntable rotation, telematics pre-interface, active defense protection system, hydraulic oil cooler, anti-environmental protection components, thumb rocker steering
Optional configuration		Half-height mesh platform, anti-squeeze hand auxiliary track, anti-squeeze device, tool tray, parts, rise protection device, anti-fall component



Work Curve Graph

