



1943-2022
XCMG 79 年

XCMG

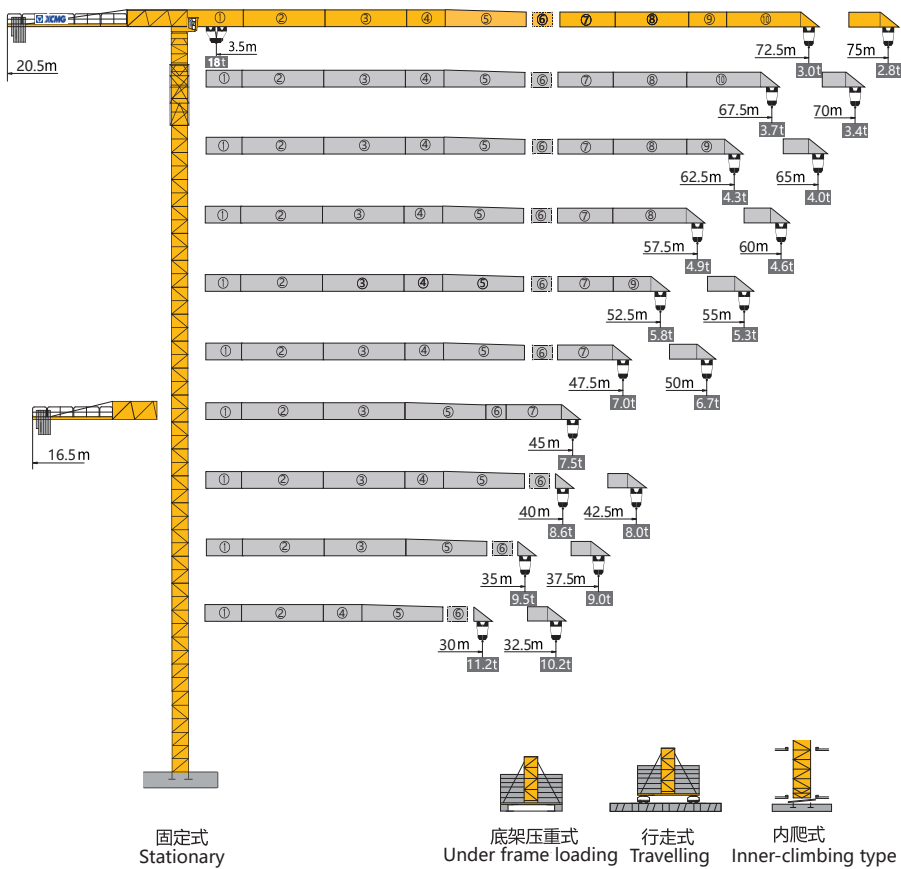
TOPLESS TOWER CRANE 平头式塔机

XGT7528A-18S1



外形尺寸

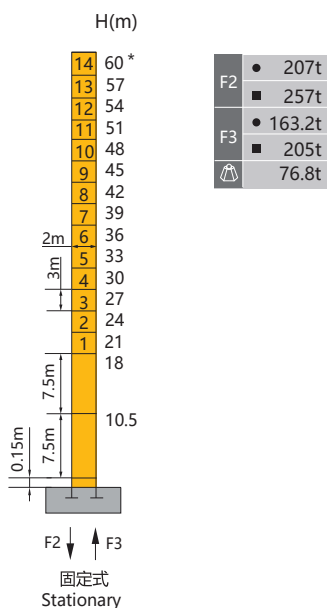
Dimensions



★ 可变换的其他安装方式与我们协商 Mounting possibilities Consult us.

塔身与反力

Masts and Reactions



H(m) 臂根铰点高度 Height of hinged point at jib root

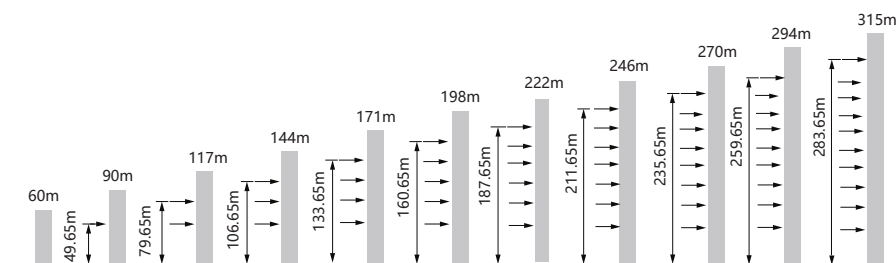
● 工作状态反力 Reactions in service ■ 非工作状态反力 Reactions out of service

🏗️ 独立高度最大臂长的自重 (不含平衡重, 不含压重)

Weight with max free standing, max jib (without counter-jib ballast and load)

附着

Anchorage



★ 如需其他的高度, 请与我们联系。 For other heights, consult us please.

起重特性

Load Diagrams

起重臂 jib R(m)	α	R _{min} m	R _(C_{max}) m	C _{max} kg	幅度 (m) / 起重重量 (kg)																		
					5	10	15	20	25	30	32.5	35	37.5	40	42.5	45	47.5	50	52.5	55	57.5	60	62.5
75	↘	3.5	28.82	9000	9000																		
		3.5	15.05	18000	18000																		
72.5	↘	3.5	29.32	9000	9000																		
		3.5	15.30	18000	18000																		
70	↘	3.5	31.11	9000	9000																		
		3.5	16.21	18000	18000																		
67.5	↘	3.5	32.02	9000	9000																		
		3.5	16.67	18000	18000																		
65	↘	3.5	32.79	9000	9000																		
		3.5	17.06	18000	18000																		
62.5	↘	3.5	33.40	9000	9000																		
		3.5	17.37	18000	18000																		
60	↘	3.5	33.87	9000	9000																		
		3.5	17.60	18000	18000																		
57.5	↘	3.5	34.18	9000	9000																		
		3.5	17.76	18000	18000																		
55	↘	3.5	34.88	9000	9000																		
		3.5	18.12	18000	18000																		
52.5	↘	3.5	35.91	9000	9000																		
		3.5	18.64	18000	18000																		
50	↘	3.5	38.65	9000	9000																		
		3.5	19.10	18000	18000																		
47.5	↘	3.5	38.86	9000	9000																		
		3.5	19.30	18000	18000																		
45	↘	3.5	38.91	9000	9000																		
		3.5	19.65	18000	18000																		
42.5	↘	3.5	38.32	9000	9000																		
		3.5	19.86	18000	18000																		
40	↘	3.5	38.42	9000	9000																		
		3.5	19.91	18000	18000																		
37.5	↘	3.5	37.50	9000	9000																		
		3.5	20.20	18000	18000																		
35	↘	3.5	35.00	9000	9000																		
		3.5	20.26	18000	18000																		
32.5	↘	3.5	32.50	9000	9000																		
		3.5	19.97	18000	18000																		
30	↘	3.5	30.00	9000	9000																		
		3.5	19.94	18000	18000																		

配重配置

Counter-jib Ballast

配重配置 Counter-jib Ballast		3320-1880		
↘ (m)	↘ (m)	⊖ (kg)	PZ3320	PZ1880
75	20.5	18480	5	1
72.5	20.5	18480	5	1
70	20.5	16600	5	0
67.5	20.5	16600	5	0
65	20.5	16600	5	0
62.5	20.5	16600	5	0
60	20.5	16600	5	0
57.5	20.5	15160	4	1
55	20.5	15160	4	1
52.5	20.5	15160	4	1
50	20.5	15160	4	1
47.5	20.5	15160	4	1
45	16.5	18480	5	1
42.5	16.5	18480	5	1
40	16.5	16600	5	0
37.5	16.5	15160	4	1
35	16.5	15160	4	1
32.5	16.5	15160	4	1
30	16.5	13280	4	0

传动机构

Mechanisms

传动机构 Mechanisms	图例 Legend	型号 Model	速度 (m/min) Speed	起重重量 (t) Hoist Weight	容绳量(m) Rope Capacity	功率(kW) Power
起升 Hoisting	▲ ● ▼	55LVF45AE	0-34	9	805 >805*	55
			0-68	3		
			0-100	1.5		
			0-17	18		
			0-34	6		
			0-50	3		
变幅 Trolleying	◀▶	8DVF8	0-80m/min			7.5
回转 Slewing	↻	15RVF	0-0.7r/min			2×7.5
行走 Travelling	◀▶	RT	0-17m/min			4×5.2
电源 Main Supply					~380V (±10%) 50Hz	
总功率 (不含顶升和行走) Gross Power (Excluding climbing and travelling)					77.5kW	

* 如需其他配置, 请与我们联系。 For other configuration, consult us please.

此样本所列技术参数不受法律约束, 具体请详见相应产品说明书。

These brochure of specifications and data are not legally binding, specific instructions please based on our product manuals.